



# ABRASIVE BELTS

## Capability Catalog 2015

### **Ceramic**

Cloth & Paper Backing  
Pages 22-23

### **Zirconia**

Cloth & Paper Backing  
Pages 16-17

### **Silicon Carbide**

Cloth & Paper Backing  
Pages 18-21

### **Aluminum Oxide**

Cloth & Paper Backing  
Pages 10-15

*Up to 128" wide  
by any length*

# COATED ABRASIVE MATERIAL

## Coated Abrasive Material Stocking Availability Chart

Material Name	Grain	Material Description (Backing Wt, Backing Type)	Coating	Page
<b>Aluminum Oxide Cloth</b>				
<b>METALWORKING</b>				
PAQJ	Aluminum Oxide	"J" Weight, Poly/Cotton Cloth Backing	Closed Coat w/Grinding Aid	10
JA165	Aluminum Oxide	"J" Weight, Poly/Cotton Cloth Backing	Closed Coat	10
R350	Aluminum Oxide	"J" Weight, Poly/Cotton Cloth Backing	Closed Coat	11
R352	Aluminum Oxide	"X-Flex" Weight, Poly/Cotton Cloth Backing	Closed Coat	11
R145	Aluminum Oxide	"X" Weight, Poly/Cotton Cloth Backing	Closed Coat	12
PAOX	Aluminum Oxide	"X" Weight, Poly/Cotton Cloth Backing	Closed Coat	12
XA911 <b>NEW</b>	Aluminum Oxide	"X" Weight, Poly/Cotton Cloth Backing	Closed Coat w/Top Coat	12
R192	Aluminum Oxide	"Y & X" Weight, Polyester Cloth Backing	Closed Coat	13
PA631	Aluminum Oxide	"Y" Weight, Polyester Cloth Backing	Closed Coat w/Top Coat	13
<b>WOODWORKING</b>				
K35F	Aluminum Oxide	"J" Weight, Poly/Cotton Cloth Backing	Open Coat	11
K35SF	Aluminum Oxide	"J" Weight, Poly/Cotton Cloth Backing	Open Coat	11
XW341	Aluminum Oxide	"X" Weight, Polyester Cloth Backing	Open Coat	14
W25	Aluminum Oxide	"Y" Weight, Polyester Cloth Backing	Open Coat	14
<b>Aluminum Oxide Paper</b>				
<b>METALWORKING AND WOODWORKING</b>				
B347 / B347W	Aluminum Oxide	"F" Weight, Paper Backing - 53", 66"	Closed Coat	15
B317 / B317W	Aluminum Oxide	"F" Weight, Paper Backing - 53", 66"	Open Coat	15
<b>ALUMINUM OXIDE MATERIAL AVAILABLE WHILE SUPPLIES LAST</b>				
<b>"J" Weight Closeouts</b>				
JA512	Aluminum Oxide	"J" Weight, Poly/Cotton Cloth Backing	Closed Coat w/Top Coat	10
K35FT	Aluminum Oxide	"J" Weight, Poly/Cotton Cloth Backing	Open Coat	
J848	Aluminum Oxide	"J" Weight, Poly/Cotton Cloth Backing	Open Coat	
KA162	Aluminum Oxide	"J" or X Weight, Cotton Cloth Backing	Close Coat	
RB346MJ	Aluminum Oxide	"J" Weight, Poly/Cotton Cloth Backing	Close Coat	
<b>"X" Weight Closeouts</b>				
XA517	Aluminum Oxide	"X" Weight, Poly/Cotton Cloth Backing	Closed Coat w/Top Coat	13
X088	Aluminum Oxide	"X" Weight, Poly/Cotton Cloth Backing	Open Coat	
TA-X	Aluminum Oxide	"X" Weight, Poly/Cotton Cloth Backing	Close Coat	
<b>"E" / "F" Weight Paper Closeouts</b>				
K117 / PHE	Aluminum Oxide	"F" Weight, Paper Backing	Open Coat	
KGf / FKA	Aluminum Oxide	"F" Weight, Paper Backing	Open Coat	
KP52F - 42"	Aluminum Oxide	"E" / "F" Weight, Paper Backing	Open Coat	
KP80E - 56"	Aluminum Oxide	"E" Weight, Paper Backing	Close coat	
<b>Zirconia Cloth</b>				
<b>METALWORKING</b>				
R203	Zirconia AO w/Grinding Aid	"Y" Weight, Polyester Cloth Backing	Closed Coat w/Top Coat	16
R205	Zirconia	"Y" Weight, Polyester Cloth Backing	Closed Coat	19
P656W	Zirconia	"Y" Weight, Polyester Cloth Backing	Closed Coat	16
PZ528	Zirconia AO w/Grinding Aid	"Y" Weight, Polyester Cloth Backing	Closed Coat w/Top Coat	16
PZ628	Zirconia	"Y" Weight, Polyester Cloth Backing	Closed Coat	17
XZ677	Zirconia	"X" Weight, Poly/Cotton Cloth Backing	Closed Coat	17
<b>WOODWORKING</b>				
XZ677	Zirconia	"X" Weight, Poly/Cotton Cloth Backing	Closed Coat	15

# STOCKING AVAILABILITY CHART

**Grits:**

*S = Stock Material*

*W = While Supplies Last*

MATERIAL STOCKING AVAILABILITY CHART

	12	16	20	24	36	40	50	60	80	100	120	150	180	220	240	280	320	400	500	600	800	1000
PAQJ									S	S	S	S	S	S	S		S	S		S		
JA165								S	S	S	S	S	S	S	S	S	S	S				
R350								S	S	S	S	S	S	S	S	S	S	S		S		
R352								S		S				S	S		S					
R145					S	S	S	S	S	S	S	S	S	S	S	W	S	W				
PAOX				S	S	S	S	S	S	S	S	S	S	S								
XA911 NEW					S	S		S	S	S	S	S	S	S		S	S	S				
R192				S			W	S	S	S	S	S	S	S	S		S	W		S		
PA631				S	S		S	S	S	S	S	S	S	S	S		S	S				
	12	16	20	24	36	40	50	60	80	100	120	150	180	220	240	280	320	400	500	600	800	1000
K35F								S	S	S	S	S	S	S								
K35SF								S	S	S	S	S	S	S								
XW341					S	S	S	S	S	S	S	S	S	S								
W25				S	S	S	S	S	S	S	S	S	S	W								
	12	16	20	24	36	40	50	60	80	100	120	150	180	220	240	280	320	400	500	600	800	1000
B347 / B347W									S	S	S	S	S	S	S	S	S	S			W	
B317 / B317W									S	S	S	S	S	S								
	12	16	20	24	36	40	50	60	80	100	120	150	180	220	240	280	320	400	500	600	800	1000
JA512								W	W	W	W	W	W	W	W	W	W	W				
K35FT								W		W	W	W	W				W					
J848											W											
KA162								W	W		W	W					W	W				
RB346MJ											W			W			W	W				
	12	16	20	24	36	40	50	60	80	100	120	150	180	220	240	280	320	400	500	600	800	1000
XA517				W	W	W	W	W	W	W	W	W	W	W	W	W	W	W				
X088								W	W	W												
TA-X							W															
	12	16	20	24	36	40	50	60	80	100	120	150	180	220	240	280	320	400	500	600	800	1000
K117 / PHE						W	W		W	W	W			W		W	W					
KGf / FKA									W	W	W											
KP52F - 42"									W	W	W											
KP80E - 56"									W													
	12	16	20	24	36	40	50	60	80	100	120	150	180	220	240	280	320	400	500	600	800	1000
R203				S	S	S	S	S	S	S	S											
R205				S	S	S	S	S	S	S	S											
P656W					S	S	S	S	S	S	S	S										
PZ528				W	S	S	S	S	S	S	S											
PZ628				S	S	S	S	S	S	W	S											
XZ677				S	S	S	S	S	S	S	S											
	12	16	20	24	36	40	50	60	80	100	120	150	180	220	240	280	320	400	500	600	800	1000
XZ677				S	S	S	S	S	S	S	S											

# COATED ABRASIVE MATERIAL

## Stocking Availability Chart (continued)

Material Name	Grain	Material Description (Backing Wt, Backing Type)	Coating	Page
<b>Zirconia Aluminum Oxide Paper</b>				
ZP320G <b>NEW</b>	Zirconia Aluminum Oxide	"G" Weight, Paper Backing	Closed Coat w/ Top Coat	18
<b>ZIRCONIA MATERIAL AVAILABLE WHILE SUPPLIES LAST</b>				
<b>Cloth Backing Closeouts</b>				
AZX	Zirconia	"X" Weight, Poly/Cotton Cloth Backing	Closed Coat	
ZH	Zirconia	"YY" Weight, Polyester Cloth Backing	Closed Coat	
ZY78/ZLY782	Zirconia	"Y" Weight, Polyester Cloth Backing	Closed Coat	
PZ533	Zirconia	"Y" Weight, Polyester Cloth Backing	Special Top Coat	
<b>"F" Weight Paper Closeouts</b>				
ZP80F - 56"	Zirconia	"F" Weight, Paper Backing	Closed Coat	
Z-F	Zirconia	"F" Weight, Paper Backing	Closed Coat	
<b>Silicon Carbide Cloth</b>				
P548W	Silicon Carbide	"Y" Weight, Polyester Cloth Backing	Closed Coat	19
PC221	Silicon Carbide	"Y & X" Weight, Polyester Cloth Backing	Closed Coat	19
XC227	Silicon Carbide	"X" Weight, Poly/Cotton Cloth Backing	Closed Coat	19
S27	Silicon Carbide	"Y" Weight, Polyester Cloth Backing	Closed Coat	20
S181	Silicon Carbide	"Y & X" Weight, Polyester Cloth Backing	Closed Coat	20
PK777	Silicon Carbide	"Y" Weight, Cork Backing	Closed Coat	21
PK777-CORK	Silicon Carbide	"X" Weight, CORK	Cork	21
<b>Silicon Carbide Paper</b>				
B547 / B547W	Silicon Carbide	"F" Weight, Paper Backing	Close Coat	18
SP40F <b>NEW</b>	Silicon Carbide	"F" Weight, Paper Backing	Close Coat	18
ST10X <b>NEW</b>	Silicon Carbide	"X" Weight, Combination Backing (Cloth/Paper)	Open Coat	
<b>SILICON CARBIDE MATERIAL AVAILABLE WHILE SUPPLIES LAST</b>				
<b>Cloth Backing Closeouts</b>				
TLY	Silicon Carbide	"Y" Weight, Polyester Cloth Backing		
P549	Silicon Carbide	"Y" Weight, Polyester Cloth Backing	Closed Coat	20
YC635	Silicon Carbide	"YP" Weight, Polyester Cloth Backing	Closed Coat	21
PC343	Silicon Carbide	"YP" Weight, Polyester Cloth Backing	Closed Coat	
W442	Silicon Carbide	"X" Weight, Cork Polishing		
Z096	Silicon Carbide	Combination Cloth/Paper Backing	Open Coat	
<b>"F" Weight Paper Closeouts</b>				
CSE	Silicon Carbide	"E" / "F" Weight, Paper Backing		
CW	Silicon Carbide	"X" Weight, Cotton Cloth Backing		
BS118/BS118 - 56"	Silicon Carbide	"F" Weight, Paper Backing		
<b>Compact Grain Cloth</b>				
PG730	Compact Grain/AO	"X" Weight, Poly/Cotton Cloth Backing	Closed Coat/Wet	22
PG830	Compact Grain/AO	"X" Weight, Polyester Cloth Backing	Closed Coat/Dry	22
PX220	Compact Grain/AO	"X" Weight, Polyester Cloth Backing	Closed Coat/Wet & Dry	22
<b>Ceramic Cloth</b>				
PCERY	Ceramic	"X" Weight, Polyester Cloth Backing	Closed Coat	23
PS999	Ceramic	"Y & X" Weight, Polyester Cloth Backing	Closed Coat w/ Top Size	23
JS997	Ceramic	"J" Weight, Poly/Cotton Cloth Backing	Closed Coat w/ Top Size	23
<b>CERAMIC MATERIAL AVAILABLE WHILE SUPPLIES LAST</b>				
PS992	Ceramic	"Y & X" Weight, Polyester Cloth Backing	Closed Coat w/ Top Coat	
S20	Ceramic	"Y" Weight, Polyester Cloth Backing	Closed Coat w/ Top Coat	
P956	Ceramic	"Y" Weight, Polyester Cloth Backing	Closed Coat	
P976	Ceramic	"Y" Weight, Polyester Cloth Backing	Closed Coat w/ Top Coat	



# STOCKING AVAILABILITY CHART

**Grits:**

*S = Stock Material*

*W = While Supplies Last*

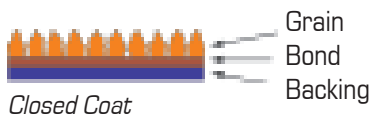
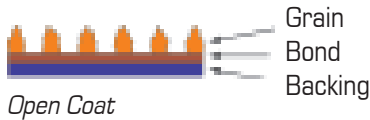
	12	16	20	24	36	40	50	60	80	100	120	150	180	220	240	280	320	400	500	600	800	1000
ZP320G				S	S	S	S	S	S	S	S											
	12	16	20	24	36	40	50	60	80	100	120	150	180	220	240	280	320	400	500	600	800	1000
AZX								W														
ZH				W					W													
ZY78/ZLY782					W				W	W												
PZ533				W	W	W	W															
ZP80F - 56"					W	W		W			W											
Z-F								W	W	W												
P548W						S	S	S	S	S	S	S	S	S								
PC221		S		S	S	S	S	S	S	S	S	S	S	S	S	S	S	S		S		
XC227				S	S	S	S	S	S	S	S	S	S				S	S		S		
S27						S	S	S	S	S	S	S	S									
S181				S			S	S	S		S	S	S	S	S		S	S		S		
PK777																	S	S		W	S	
PK777-CORK	Cork is in stock																					
B547 / B547W				W	W		W	W	W	W	S	S	S	S	S	S	S	S		S		
SP40F NEW				S	S	S	S	S	S	S	S											
ST10X NEW	S	S																				
	12	16	20	24	36	40	50	60	80	100	120	150	180	220	240	280	320	400	500	600	800	1000
TLY									W													
P549					W			W	W	W	W											
YC635				W																		
PC343							W															
W442																				W		
Z096	W	W	W	W																		
CSE													W	W	W							
CW											W											
BS118/BS118 - 56"									W	W	W	W	W		W	W	W		W			
PG730									S		S		S		S		S	S		S		
PG830									S		S		S		S		S	S		S		
PX220											S		S		S		S	S		S	S	W
PCERY					S		S	S	S		S											
PS999				S	S	S	S	S	S	S	S											
JS997								S	S	S		S	S	S								
	12	16	20	24	36	40	50	60	80	100	120	150	180	220	240	280	320	400	500	600	800	1000
PS992				W	W	W		W	W	W												
S20					W		W	W	W		W											
P956									W	W												
P976							W	W														

MATERIAL STOCKING AVAILABILITY CHART

# ABRASIVE MATERIAL

## ABRASIVE GRAIN COVERAGE

### Abrasive Grain Spacing



The manner in which the abrasive grains are distributed on the backing is referred to as its "Coating". The two levels of abrasive grain density are open coat and closed coat.

### Open Coat

Abrasive grains cover approximately 50% - 60% of the coated surface. Open coat products generally offer greater flexibility, faster cutting, coarser finish and provide a greater resistance to loading. Open coat products are used widely for woodworking applications, with limited applications for metal.

### Closed Coat

Abrasive grains cover 100% of the coated surface. The greater number of abrasive grains normally results in a better finish and a higher amount of stock removal during the life of the product. If loading is not a problem, a closed coat product will give you superior life and lower cost. Closed coat products are widely used in metalworking and woodworking applications.

## WIDE BELT SPLICES

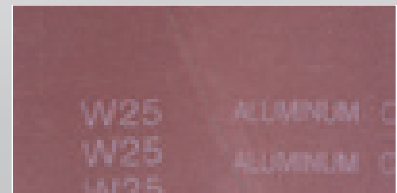
Most abrasive belts today utilize a taped joint, commonly referred to as a "butt joint". Butt joints offer a very strong joint and consistency relative to the thickness of the joint. Lap joints are rarely used today except for shape sanding, where it is superior to a butt joint, and some applications of wide belts. Most splices are cut at a 67° angle to the side of the belt.



**Butt Splice, Straight Cut:** strong bi-directional tape splice. Our standard splice for all paper belts and cloth belts over 53" width. A strong bump free splice that **can be run in either direction**.

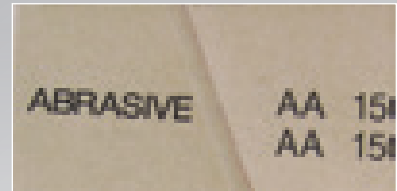
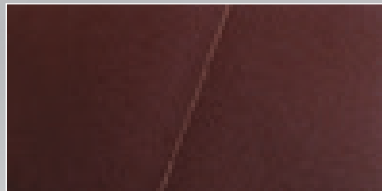


**PASCO Lock Splice:** strong bi-directional tape splice, used mainly to improve the finish on wide belts which reduces hinging and eliminates splice marks. Our standard splice on cloth belts 60 grit and finer. A strong bump free splice that **can be run in either direction**.



**Tape-On-Top Splice:** Cloth belts only. The abrasive grain is removed and the tape is applied to the grain side of the belt. This provides a bi-directional splice that is thinner at the splice than the rest of the belt. **Can be run in either direction**.

Additional 7% cost on all materials. The perfect "bump free" splice, can only be used with a platen or solid steel contact wheel.



**1/4" Lap Splice:** Paper belts only. Design enables us to manufacture 1/4" lap splices on paper belts with a  $\pm 0.000$  tolerance. **Can only be run in one direction**.

Additional 7% cost on all materials.



An 80" X 150" wide resin cloth sectional belt with Tape-On-Top Splices. We make belts up to 128" wide

## BACKINGS

### "J" Weight Cloth:

The most **flexible**, and lightest weight of the cloth backings, used extensively for contour grinding. Available in aluminum oxide, open and closed coat, and silicon carbide, closed coat.

### "X" Weight. Cloth:

A heavier backing used **on most abrasive belts** for all types of applications where you need a stronger backing or where extreme flexibility is not required. Available in aluminum oxide, open and closed coat, silicon carbide, closed coat.

### "X" & "Y" Weight Polyester:

Synthetic backings designed for their extreme strength, widely used in **severe grinding and wide belt applications for metal, glass, and wood working**. Polyester backed belts are waterproof, and can be used either wet or dry, and the belts are washable. Available in aluminum oxide, open and closed coat, silicon carbide closed coat, and zirconia alumina closed coat.

### Paper Backings:

Available in "A", "B", "C" & "D" weights for use in sheet, rolls and discs. "E", "F", and "G" weights for use in sheets, belts, discs and rolls. As the weight of the paper backing increases, the flexibility decreases for tear and mechanical resistance.

WEIGHT	APPLICATION/USE
"A", 80 g/m <sup>2</sup>	Light
"B", 80 - 100 g/m <sup>2</sup>	↑ ↓
"C", 105 - 125 g/m <sup>2</sup>	
"D", 130 - 175 g/m <sup>2</sup>	
"E", 220 - 250 g/m <sup>2</sup>	
"F", 270 - 300 g/m <sup>2</sup>	
"G", 400 g/m <sup>2</sup>	Heavy

## BOND SYSTEMS

### Glue Bonds:

Glue bond systems use animal hide glues, alone and with fillers. Glue bonds are not as resistant to heat as resin bonds, but do give a finer finish than resin bonds. Glue bonds are more flexible than resin bonds. The major usage of glue bond products is for sheets used in hand sanding operations.

### Resin Bonds:

Resin bonds offer greater resistance to heat, are more durable in heavy stock removal applications and provide the best all-around bond system. Resin bonds have a tendency to provide a harsher, more scratchy finish in fine grits and is more difficult to polish out. There are two types of resins used for manufacturing coated abrasive products. Urea resins are a weak inexpensive resin that is not much better than a glue bond system. Phenolic resins are very strong and heat resistant. Most abrasive belts utilize the superior phenolic resin bond system.



# CONVERSION CHART

## ALUMINUM OXIDE

PASCO	GRN	BKG	GRITS	SHAPE*	3M	NORTON	HERMES	VSM	CARBO	KLINGSPOR
PAOJ	A	J	80-600	B/R	210E	R245	RB346J	KK511J	JBFO855	LS309J
JA512 / JA165	A	J	60-400	B/R	210E	R245	RB346J	KK511J	JBFO855	LS309J
R350	A	J	60-600	B/R	210E	R245	RB346J	KK511J	JBFO855	LS313JF
R352	A	X	80-320	B/D/R/		COMPETITORS HAVE NO EQUAL				CS310XF
K35F OP	A	J	60-220	B/D/R	200D	—	RB303F	KK504J	JCF07650	LS318JF
K35SF OP	A	J	80-220	B/D/S/R	—	R202	RB306JF	KK514F / KK504F	JCF07650	LS318JF
R145 / XA911	A	X	36-400	B/D/R	241D	R228 / R249	RB346MX	KK511X	XC0877	CS310X
XA517 / PAOX	A	X	24-400	B/D/R	241D	R228	RB346MX	KK511X	XC0851	CS310X
R192 (Grinding Aid)	A	YP/XP	24-600	B	261F / 363F	R243 / R247 R267	RB376TY	KK711X / KK711Y	XBS0987W	CS308Y/ CS412Y
PA631 (HT Alo Grain)	A	YP	24-400	B	261F / 363F	R243 / R247 R267	RB376TY	KK711X / KK711Y	XBS0987W	CS308Y/ CS412Y
XW341 OP	A	X	24-220	B/D/R	240D	R215	RB316XOP	KK504X / KK505X	XC07760	CS311Y
W25	A	Y	24-220	B/D/R	260D / 270D	R217	RB372YOP		XBS0986WO	CS311Y
B347W (Antistatic)	A	F	80-800	B/D	261UZ	H248	—	F0714AO	—	PS22F
B317W (Antistatic)	A	F	80-220	B/D	260UZ	H258	—	—	—	PS23F

## ZIRCONIA ALUMINA

PASCO	GRN	BKG	GRITS	SHAPE*	3M	NORTON	HERMES	VSM	CARBO	KLINGSPOR
R203 (Grinding Aid)	Z	Y	24-120	B/D	761F / 777F / 577F	E964 / R820 / R824	RB484 / RB488Y	KK765Y / KK716Y	YP1187W	CS409Y
PZ528 (Grinding Aid)	Z	Y	24-120	B	761F / 777F	E964 / R820 / R824	—	—	YP1187W	CS409Y
P656W	Z	Y	36-150	B		COMPETITORS HAVE NO EQUAL				CS411Y
R205	Z	Y	24-120	B/D	747D / 777F	E823 / R811 / R823	RB484TY	KK715X	YP1187W	CS411Y
PZ628	Z	Y	24-120	B/D	761F / 777F	E964 / R820 / R824	RB484 / RB488Y	KK765Y / KK716Y	YP1187W	CS411Y
XZ677	Z	X	24-120	B/D						CS411X

## SILICON CARBIDE

PASCO	GRN	BKG	GRITS	SHAPE*	3M	NORTON	HERMES	VSM	CARBO	KLINGSPOR
P548W (67" Wide)	C	Y	40-220	B						CS336Y
PC221	C	Y/X	16-600	B/D/R	441D / 453W	R422 / R423	RB318X	CK721X	XC0475W	CS320Y/CS321X
XC227	C	X	24-600	B/D/R						CS321X
S27 (Antistatic)	C	Y	40-180	B/D	471G / 471Z	E412	RB375Y	—	—	CS336Y
S181	C	YP/XP	24-600	B/D/R	441D / 453W	R422 / R423	RB318X	CK721X	XC0475W	CS320Y/CS321Y
P549	C	Y	40-120	B						CS336Y
PK777	C	Y	320-Cork	B						—
B547(W)	C	F	120-600	B	451N	G421	BS118	CP501E	E0411	PS24F

## COMPACT GRAIN

PASCO	GRN	BKG	GRITS	SHAPE*	3M	NORTON	HERMES	VSM	CARBO	KLINGSPOR
PG730	A	Y	80-600	B/D				KK718X		—
PG830	A	Y	80-800	B/D			—	KK712X	—	—

## CERAMIC ALUMINA

PASCO	GRN	BKG	GRITS	SHAPE*	3M	NORTON	HERMES	VSM	CARBO	KLINGSPOR
PCERY	CA	X	36-120	B	977F	R980 / R981		XK870X		CS811Y/CS910Y
PS999	CA	XY	24-120	B	963G / 977F	R922	—	XK870X	—	CS811Y/CS910Y
PS997	CA	J	60-220	B			—	—	—	CS631JF

\* B = Belts, D = Disc, R = Rolls, S = Sheets

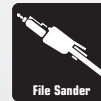
# SURFACE CONDITIONING BELTS

Surface Conditioning material utilizes a substrate base (nylon fiber), a resin bond (phenolic or polyurethane) and abrasive grain (aluminum oxide, silicon carbide, alumina silicate). The fiber and resin are fully waterproof so the product can be used wet or dry.

The structure is extremely open so that the product resists loading and runs cool compared to coated abrasives. The product is available in three grades: Coarse – equivalent to 120 grit finish; Medium – equivalent to 180 grit finish; Very Fine – equivalent to 320 grit finish.



- For cleaning, finishing, blending and deburring applications.
- Belts provide a linear grain scratch pattern for blending stainless welds.
- Blends and finishes without undercutting or gouging work pieces.
- Belts 40 inches and less are made from X-Flex material for flexibility. For hand held tools.
- Belts over 40 inches in length are made from Low Stretch material for reliable dimension holding – no stretching. For stationary machines.



File Sander



Portable Belt Sander



Benchstand Grinder



Backstand Belt Grinder

## Surface Conditioning Material - X-Flex

ALUMINUM OXIDE

### Aluminum Oxide

- Very flexible in structure allows belts to run around a small diameter contact wheel (less than 1") without cracking.
- Designed to prevent belt delamination and gives exceptional durability.
- Ideal for narrow belts such as belts used on Dynafiles.
- For stainless steel, aluminum, titanium, non-ferrous materials and alloys, fiberglass and plastic.

PRODUCT	WIDTH	GRAIN TYPE	GRADE	COLOR	GRIT EQUIVALENT
PCXF88	40	Aluminum Oxide	Coarse	Brown	120
PCXF89	40	Aluminum Oxide	Medium	Red	180
PCXF90	40	Aluminum Oxide	Very Fine	Blue	320

## Surface Conditioning Material - Low Stretch

ALUMINUM OXIDE

### Aluminum Oxide

- Resists stretch in the length direction; ideal for longer belts.
- Designed for exceptional durability.
- For stainless steel, aluminum, titanium, non-ferrous materials and alloys, fiberglass and plastic.

PRODUCT	WIDTH	GRAIN TYPE	GRADE	COLOR	GRIT EQUIVALENT
PCLS81	40	Aluminum Oxide	Coarse	Brown	120
PCLS82	40	Aluminum Oxide	Medium	Red	180
PCLS83	40	Aluminum Oxide	Very Fine	Blue	320





# ALUMINUM OXIDE MATERIAL

## "J" Weight Aluminum Oxide Cloth Backed Belts

Aluminum oxide grain is ideal for grinding high tensile strength materials such as carbon steels, alloy steels, tough bronze and hard woods.

### PAOJ - Performance Material

Aluminum Oxide, Polyester/Cotton, "J" Weight Backing

ALUMINUM OXIDE

- For finishing operations that require flexibility.
- Grinding Aid for longer cutting life.
- Used on backstand grinders, slack of belt machines and profile grinders.
- For alloys, steels, aluminum, brass, bronze, titanium and wood.

**Applications:** Used for finish sanding of shapes and profiles that require a flexible belt. Mold sanding of wood.

**Key Markets:** Plating and polishing, hand tools, surgical instruments, cutlery, medical implants, golf clubs, jet & turbine blades, outboard motor propellers, plumbing fixtures.

PRODUCT	WIDTH	TYPE	GRAIN TYPE	BACKING	BOND	COATING	ANTISTATIC
PAOJ	55"	Cloth	Aluminum Oxide	J	R/R	Closed Coat	No



**#1 Seller!**

**GRITS:**

80, 100, 120, 150, 180, 220, 240, 320, 400, 600

### JA165

Aluminum Oxide, Polyester/Cotton, "J" Weight Backing

ALUMINUM OXIDE

- Very flexible, fast rate of cut and long life.
- Used on backstand grinders, slack of belt machines and profile grinders.
- For alloys steels, aluminum, brass, bronze, titanium and wood.

**Applications:** Used for finish sanding of shapes and profiles that require a flexible belt. Mold sanding of wood.

**Key Markets:** Plating and polishing, hand tools, surgical instruments, cutlery, medical implants, golf clubs, jet & turbine blades, outboard motor propellers, plumbing fixtures.

PRODUCT	WIDTH	TYPE	GRAIN TYPE	BACKING	BOND	COATING	ANTISTATIC
JA165	55"	Cloth	Aluminum Oxide	J	R/R	Closed Coat	No



JA165

**GRITS:**

60, 80, 100, 120, 150, 180, 220, 240, 280, 320, 400

### JA512 - Discontinued

Aluminum Oxide, Polyester/Cotton, "J" Weight Backing

ALUMINUM OXIDE

- Premium aluminum oxide with a size coating and an active filler.
- Polyester/cotton blend "J" weight for a higher degree of flexibility.
- Wear resistant anti-slip treatment for increased productivity.

**Applications:** Used on stainless steel, heat treated steel, scissors, cutlery and surgical instruments.

PRODUCT	WIDTH	TYPE	GRAIN TYPE	BACKING	BOND	COATING	ANTISTATIC
JA512	55"	Cloth	Aluminum Oxide	J	R/R	Closed Coat	No



**While  
Supplies  
Last**

**GRITS:**

60, 80, 100, 120, 150, 180, 220, 240, 280, 320, 400

**NOTE:** Not used for wide belts.

## "J & X-Flex" Weight Cloth Backed Belts

### R350

Aluminum Oxide, 65/35 Polyester/Cotton, "J" Weight Backing

- Soft backing with a **high degree of flexibility**.
- Used on backstand grinders, slack of belt machines and profile grinders.
- For alloys, steels, aluminum, brass, bronze, titanium and wood.

**Applications:** Used for finish sanding of shapes and profiles that require a flexible belt. Mold sanding of Wood.

**Key Markets:** Plating and polishing, hand tools, surgical instruments, cutlery, medical implants, golf clubs, jet & turbine blades, outboard motor propellers, plumbing fixtures.

ALUMINUM OXIDE



PRODUCT	WIDTH	TYPE	GRAIN TYPE	BACKING	BOND	COATING	ANTISTATIC
R350	53"	Cloth	Aluminum Oxide	J	R/R	Closed Coat	No

**GRITS:**

60, 80, 100, 120, 150, 180, 220, 240, 280, 320, 400, 600

### R352

Aluminum Oxide, Polyester/Cotton, "X-Flex" Weight Backing

- 65/35 Polyester/cotton "X-Flex" weight. Ideal for operations that require good flexibility, yet require more strength than "J" weight products.
- Used on backstand grinders, slack of belt machines and profile grinders.
- For Alloy Steels, aluminum, brass, bronze, titanium, stainless, mild steels.
- Good quality; Economically priced (especially when the belt cost is a prime consideration).

**Applications:** Used for finish sanding of shapes and profiles that require a flexible belt. Mold sanding of wood.

**Key Markets:** Plating and polishing, hand tools, surgical instruments, cutlery, medical implants, golf clubs, jet & turbine, blades, plumbing fixtures.

ALUMINUM OXIDE



PRODUCT	WIDTH	TYPE	GRAIN TYPE	BACKING	BOND	COATING	ANTISTATIC
R352	53"	Cloth	Aluminum Oxide	X	R/R	Closed Coat	No

**GRITS:**

80, 120, 220, 240, 320

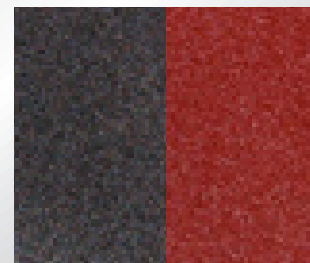
### K35F & K35SF

Aluminum Oxide, Polyester/Cotton, "J" Weight Backing

- K35F Semi-flexible "J" weight backing for contour edge sanding.
- Pump sleeve sanders, molding sanders and edge sanders. DA sanders.
- K35SF – super flexed version of K35F material designed for profile & shape sanding and dual action (DA) sanding discs.
- Sanding of profiles and shapes using belts and pump sleeves. On DA sanders where the edge of a paper disc will tear.

**Key Markets:** Furniture, cabinets, moldings, millwork, wooden door manufacturers

ALUMINUM OXIDE



K35F

K35SF

**K35F GRITS:**

60, 80, 100, 120, 150, 180, 220

**K35SF GRITS:**

80, 100, 120, 150, 180, 220

PRODUCT	WIDTH	TYPE	GRAIN TYPE	BACKING	BOND	COATING	ANTISTATIC
K35F & K35SF	54"	Cloth	Aluminum Oxide	J	R/R	Open Coat	No

**NOTE:** Not used for wide belts.

# ALUMINUM OXIDE MATERIAL

## "X" Weight Aluminum Oxide Cloth Backed Belts

### R145

#### Aluminum Oxide, Polyester/Cotton, "X" Weight Backing

- 65/35 Polyester/cotton blend "X" weight backing.  
Our most popular "X" weight product for *narrow and wide belts*.
- Excellent product for sanding various metals. Excellent finish on Hardwoods in finer grits with Wide Belts.
- Used on backstand grinders, wide belt sanders, slack of belt machines, platen machines, profile grinders.
- For aluminum, cast iron, brass, bronze, carbon steel, stainless and alloys.

**Applications:** Stock removal, dimensioning, deburring, blending and polishing.

**Key Markets:** Non-Ferrous Foundries, Machine Shops, Sheet Metal, Tubing, Hand Tools, Cutlery, Plumbing Fixtures, Furniture and Cabinets, Wooden Doors.

ALUMINUM OXIDE



**GRITS - While Supplies Last:**  
280, 400

**GRITS:**  
36, 40, 50, 60, 80, 100, 120, 150,  
180, 220, 240, 320

PRODUCT	WIDTH	TYPE	GRAIN TYPE	BACKING	BOND	COATING	ANTISTATIC
R145	53"	Cloth	Aluminum Oxide	X	R/R	Closed Coat	No



### XA911

#### Aluminum Oxide, Polyester, "X" Weight Backing

- High Cutting Performance and Increased productivity.
- XA911 is an upgrade over XA517.
- Heavy durable backing with size coating and active filler.
- Used on backstand grinders, wide belt sanders, slack of belt machines, platen machines, profile grinders.
- For aluminum, cast iron, brass, bronze, carbon steel, stainless and alloys.

**Applications:** Stock removal, dimensioning, deburring, blending and polishing.

**Key Markets:** Non-Ferrous Foundries, Machine Shops, Sheet Metal, Tubing, Hand Tools, Cutlery, Plumbing Fixtures, Furniture and Cabinets.

ALUMINUM OXIDE



**GRITS:**  
36, 40, 60, 80, 100, 120, 150, 180,  
220, 280, 320, 400

PRODUCT	WIDTH	TYPE	GRAIN TYPE	BACKING	BOND	COATING	ANTISTATIC
XA911	54"	Cloth	Aluminum Oxide	X	R/R	Closed Coat	No

### PAOX

#### Aluminum Oxide, Polyester/Cotton, "X" Weight Backing

- General purpose sanding of metal and wood.
- Machines Used - Backstand Grinders, Wide Belt Sanders, Slack of Belt Machines, Platen Machines, Profile Grinders.
- Materials - Aluminum, Cast Iron, Brass, Bronze, Carbon Steel, Stainless and Alloys.
- High quality, economy X-weight material for superior cost savings.

**Applications:** Stock removal dimensioning, deburring, blending and polishing.

**Key Markets:** Non Ferrous Foundries, Machine Shops, Sheet Metal, Tubing, Hand Tools, Cutlery, Plumbing Fixtures, Furniture and Cabinets.

ALUMINUM OXIDE



**GRITS:**  
24, 36, 40, 50, 60, 80, 100,  
120, 150, 180, 220

PRODUCT	WIDTH	TYPE	GRAIN TYPE	BACKING	BOND	COATING	ANTISTATIC
PAOX	54"	Cloth	Aluminum Oxide	X	R/R	Closed Coat	No

## "X & Y" Weight Aluminum Oxide Cloth Backed Belts

### PA631

#### Aluminum Oxide, Polyester, "Y" Weight Backing

- Good edge wear resistance, long life and cool cutting action.
- Premium Aluminum Oxide and grinding aid for cool cut and longer life.
- High stretch resistance with very stable backing material and high grain adhesion.
- Used on backstand grinders, wide belt sanders, slack of belt machines, platen machines.
- For aluminum, bronze, brass, zinc, carbon steel.

ALUMINUM OXIDE

USE  
DRY

**Applications:** For heavy stock removal, removing gates and risers on castings and for finishing flat surfaces.

**Key Markets:** Foundries, Hand Tools, Cutlery, Stainless steel coils and sheet polishing, Dairy and Restaurant Equipment.

PRODUCT	WIDTH	TYPE	GRAIN TYPE	BACKING	BOND	COATING	ANTISTATIC
PA631	54"	Cloth	Aluminum Oxide	Y	R/R	Closed Coat	No

#### GRITS:

24, 36, 50, 60, 80, 100, 120, 150,  
180, 220, 240, 320, 400

### R192

#### Aluminum Oxide, Polyester, "X & Y" Weight Backing

- "Y" weight Polyester resin bond for 60 grit and coarser.
- "X" weight Polyester resin bond for 100 grit and finer.
- Polyester resin bond backing, may be used wet or dry.
- Grinding aid for cool cutting action and longer life.
- Used on backstand grinders, wide belt sanders, slack of belt machines, platen machines.
- Excellent for gate and riser removals of casting.
- Ideal for wide belts for metal working; cost effective.
- For Tool Steels, Stainless, Aluminum, Alloys.

ALUMINUM OXIDE

USE  
WET | DRY

**Applications:** Stock removal, deburring, blending and polishing.

**Key Markets:** Foundries, metal sheet polishers, sheet metal, dairy and restaurant equipment.

PRODUCT	WIDTH	TYPE	GRAIN TYPE	BACKING	BOND	COATING	ANTISTATIC
R192	53"	Cloth	Aluminum Oxide	X & Y	R/R	Closed Coat	No

R192

**GRITS - While Supplies Last:** 50, 400

#### GRITS:

24, 60, 80, 100, 120, 150, 180,  
220, 240, 320, 600

### XA517 - Discontinued

#### Aluminum Oxide, Polyester, "X" Weight Backing

- "X" weight resin bond cloth for general purpose use.
- Top coat with an active filler provides high cutting performance and increased productivity.
- Similar to R145 product.
- Machines Used - Backstand Grinders, Wide Belt Sanders, Slack of Belt Machines, Platen Machines, Profile Grinders.
- Materials - Aluminum, Cast Iron, Brass, Bronze, Carbon Steel, Stainless and Alloys.
- Used mainly for *narrow and wide belts*.

ALUMINUM OXIDE

**Applications:** Stock removal, dimensioning, deburring, blending and polishing.

**Key Markets:** Non Ferrous Foundries, Machine Shops, Sheet Metal, Tubing, Hand Tools, Cutlery, plumbing fixtures, Furniture and Cabinets.



**While  
Supplies  
Last**

PRODUCT	WIDTH	TYPE	GRAIN TYPE	BACKING	BOND	COATING	ANTISTATIC
XA517	54"	Cloth	Aluminum Oxide	X	R/R	Closed Coat	No

#### GRITS:

24, 36, 40, 50, 60, 80, 100, 120,  
150, 180, 220, 240, 280, 320, 400



# ALUMINUM OXIDE MATERIAL

## "X & Y" Weight Cloth Backed Belts (continued)

### XW341

#### Weight Backing, Polyester, "X" Weight Backing

- Our most popular woodworking wide belt (most common sizes in stock).
- For hardwood sanding (grits: 36 - 120).
- Strong backing for long life and good finish.
- Used on wide belt sanders, stroke sanders, edge sanders, portable belt sanders.
- For all types of woods.

#### ALUMINUM OXIDE



FPO

**Applications:** For sanding the flat surfaces and edges.

**Key Markets:** Furniture, Cabinets, Millwork and Wood Doors.

PRODUCT	WIDTH	TYPE	GRAIN TYPE	BACKING	BOND	COATING	ANTISTATIC
XW341	54"	Cloth	Aluminum Oxide	X	R/R	Open Coat	No

#### GRITS:

36, 40, 50, 60, 80, 100, 120, 150, 180, 220

### W25

#### Weight Backing, Poly/Cotton "Y" Weight Backing

- Fast cutting performance. Longer lasting.
- Used on wide belt sanders, edge sanders.
- For solid woods and plywood.
- Ideal for planning work pieces (recommended grits: 24, 36, 40).
- Polyester backing allows for washing. Washing belts provides a cost saving.
- More durability than X weight products.

#### ALUMINUM OXIDE



**Applications:** For high stock removal at a fast cut rate to dimension the flat workpiece.

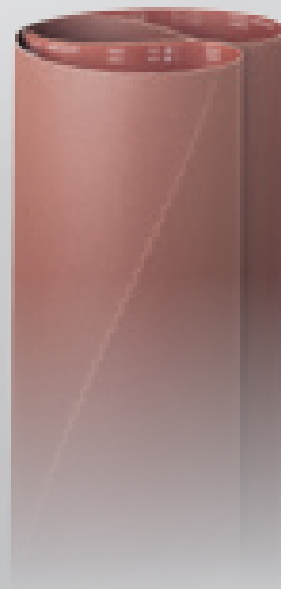
**Key Markets:** Cabinets, Furniture, Millwork and Wood Doors.

PRODUCT	WIDTH	TYPE	GRAIN TYPE	BACKING	BOND	COATING	ANTISTATIC
W25	53"	Cloth	Aluminum Oxide	Y	R/R	Open Coat	No

#### GRITS:

24, 36, 40, 50, 60, 80, 100, 120, 150, 180, 220

**GRITS - While Supplies Last: 220**



W25

# CLOTH



# CLOTH/PAPER

ALUMINUM OXIDE MATERIAL

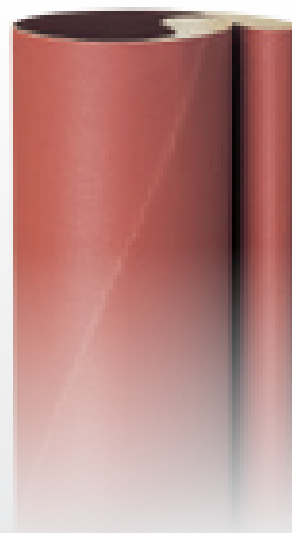
## "F" Weight Aluminum Oxide Paper Backed Belts

### B347 & B347W

#### Aluminum Oxide, Paper, "F" Weight Backing

- Best choice for a superior finish on final head. Longer life and better finish than open coat products.
- Use 150 grit & finer for a superior finish.
- Antistatic treatment helps minimize and/or eliminate sanding dust build up in the machine.
- For solid woods, hardwoods, veneers, plywood, metal sheets and leather.
- B347 up to 53" wide belts.  
B547W up to 66" wide belts.

ALUMINUM OXIDE



B347

**Applications:** For medium and fine sanding of flat wood products and stroke sanders. Also used for polishing metal sheets and cross belts on wide belt sanders. Sanding Leather Hides.

**Key Markets:** Cabinets, Furniture and Wooden Doors. Metal Polishing operations, Dairy and Restaurant Equipment and Leather Tanning operations.

PRODUCT	WIDTH	TYPE	GRAIN TYPE	BACKING	BOND	COATING	ANTISTATIC
B347	53"	Paper	Aluminum Oxide	F	R/R	Closed Coat	Yes
B347W	66"	Paper	Aluminum Oxide	F	R/R	Closed Coat	Yes

#### B347 / B347 GRITS:

80, 100, 120, 150, 180, 220, 240, 280, 320, 400, 800

### B317 & B317W

#### Aluminum Oxide, Paper, "F" Weight Backing

- Antistatic treatment helps minimize and/or eliminate sanding dust build up in the machine.
- Good rate of cut with a consistent finish. Less loading.
- Used on wide belt sanders, stroke sanders.
- Ideal for medium and fine sanding of hardwoods.
- For solid wood, hardwoods, veneers and plywoods.
- B317 up to 53" wide belts.  
B317W up to 66" wide belts.

ALUMINUM OXIDE



**Applications:** For medium and fine sanding of flat wood products. Also used as cross belts on wide belt sanders.

**Key Markets:** Cabinets, Furniture and Wood Doors.

PRODUCT	WIDTH	TYPE	GRAIN TYPE	BACKING	BOND	COATING	ANTISTATIC
B317	53"	Paper	Aluminum Oxide	F	R/R	Open Coat	Yes
B317W	66"	Paper	Aluminum Oxide	F	R/R	Open Coat	Yes

#### B317 / B317W GRITS:

80, 100, 120, 150, 180, 220



CGW: 800.447.4248



PASCO: 800.755.2042

# ZIRCONIA MATERIAL

## "Y" Weight Cloth Backed Belts - Long Life Belts

Zirconia alumina is ideal for heavy metal grinding and wood planning because of its controlled fracturing design exposes new, sharp cutting edges.

### R203

#### Zirconia AO with Grinding Aid, Polyester, "Y" Weight Backing

- Very cool cutting and long belt life.
- Two coatings of grinding aid for use in severe grinding applications.
- Competitively priced - even against ceramic products.
- Used on backstand grinders, power pac grinders, wide belts sanders, centerless grinder, platen grinder, profile grinder.
- For stainless steel, nickel, alloys, hard aluminum, titanium and tool steel.

ZIRCONIA AO  
w/GRINDING AID



#1 Seller!

R203

**Applications:** For high pressure and high stock removal grinding operations. Flat sanding of stainless, nickel alloys and other hard alloys. Used on Profile Grinders for removing welds and deburring

**Applications:** Investment cast foundries, jet blades, hand tools, dairy and restaurant equipment.

PRODUCT	WIDTH	TYPE	GRAIN TYPE	BACKING	BOND	COATING	ANTISTATIC
R203	53"	Cloth	Zirconia	Y	R/R	Closed Coat	No

**GRITS:**

24, 36, 40, 50, 60, 80, 100, 120

### PZ528

#### Zirconia AO with Grinding Aid, Polyester, "YY" Weight Backing

- Two coatings of grinding aid for use in severe grinding applications.
- Very cool cutting and long belt life.
- Competitively priced - even against ceramic products.
- Used on backstand grinders, power pac grinders, wide belt sanders, centerless grinder, platen grinder, profile grinder.
- For stainless steel, nickel alloys, hard aluminum, titanium and tool steels.

ZIRCONIA AO  
w/GRINDING AID



**Applications:** For high pressure and high stock removal grinding operations. Flat sanding of stainless, nickel alloys and other hard alloys. Used on Profile grinders for removing welds and deburring.

**Key Markets:** Investment cast foundries, jet blades and hand tools, dairy and restaurant equipment.

PZ528

PRODUCT	WIDTH	TYPE	GRAIN TYPE	BACKING	BOND	COATING	ANTISTATIC
PZ528	54"	Cloth	Zirconia	YY	R/R	Closed Coat	No

**GRITS - While Supplies Last: 24**

**GRITS:**

36, 40, 50, 60, 80, 100, 120

### P656W

#### Zirconia, Polyester, "Y" Weight Backing

- Antistatic treatment helps minimize and/or eliminate sanding dust build up in the machine. Treated for slippage.
- Fast cut and long life. High cutting performance.
- Stainless steel polishing with wet grinding.
- Used on wide belt sanders.
- For particleboard, MDF, HDF and stainless steel.
- Single splice belts - up to 66" wide, sectional - up to 128".



ZIRCONIA

USE  
WET | DRY

**Applications:** For calibrating and finish sanding Particleboard, MDG and HDF products. Also used for rough grinding on Stainless Steel Coils and Sheets.

**Key Markets:** Particleboard, MDF, HDF manufacturers. Metal service center for the metal operations.

P656W

PRODUCT	WIDTH	TYPE	GRAIN TYPE	BACKING	BOND	COATING	ANTISTATIC
P656W	67"	Cloth	Zirconia	Y	R/R	Closed Coat	No

**GRITS:**

36, 40, 50, 60, 80, 100, 120, 150

## "Y & X" Weight Zirconia Cloth Backed Belts

### R205

#### Zirconia, Polyester, "Y" Weight Backing

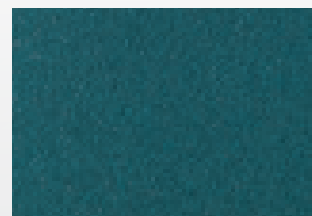
- Ideal for calibration sanding (recommended grits: 24 - 60).
- Strong zirconia grain and cooling grinding aid for longer working life and fast cuts.
- Used on backstand grinders, wide belt sanders, stroke sanders, platen grinders, centerless grinders, profile grinders.
- For Non-Ferrous Metals, Stainless Steel, carbon steel, cast iron alloys and solid wood products.

ZIRCONIA

USE  
WET | DRY

**Applications:** For removing gates and raisers on Non-Ferrous castings. Deburring and Polishing of Forging, Castings, etc. Abrasive planning with wide belts using high pressure for fast and high stock removal. Used on metals to generate the desired surface finish.

**Key Markets:** Foundries, Jet & Turbine Blades, Hand Tools, Cutlery, Machine Shops, Dairy and Restaurant Equipment.



R205

PRODUCT	WIDTH	TYPE	GRAIN TYPE	BACKING	BOND	COATING	ANTISTATIC
R205	53"	Cloth	Zirconia	Y	R/R	Closed Coat	No

**GRITS:**

24, 36, 40, 50, 60, 80, 100, 120

### PZ628

#### Zirconia, Polyester, "Y" Weight Backing

- Grinding aid for fast cutting action in moderate grinding applications.
- Used on backstand grinders, wide belt sanders, stroke sanders, platen machines, centerless grinders, profile grinders.
- For non-ferrous metals, stainless steel, carbon steel, cast iron, alloys and solid wood products.

ZIRCONIA

USE  
WET | DRY

**Applications:** For removing gates and raisers on Non-Ferrous castings. Deburring and polishing of Forging, Castings, etc. Abrasive planning with wide belts using high pressure for fast and high stock removal. Used on metals to generate the desired surface finish.

**Key Markets:** Foundries, Jet & Turbine Blades, Hand Tools, Cutler, Machine shops and Dairy and Restaurant Equipment.

PRODUCT	WIDTH	TYPE	GRAIN TYPE	BACKING	BOND	COATING	ANTISTATIC
PZ628	54"	Cloth	Zirconia	Y	R/R	Closed Coat	No

GRITS - While Supplies Last: 100

**GRITS:**

24, 36, 40, 50, 60, 80, 120

### XZ677

#### Zirconia, Polyester/Cotton, "X" Weight Backing

- Ideal for calibration and floor sanding (recommended grits: 24 - 60).
- Zirconia grain with size coating with an active filler for high cutting performance and longer working life.
- Used on backstand grinders, wide belt sanders, stroke sanders, profile grinders, floor sanding machines.
- For carbon steel, aluminum, cast iron, titanium, alloys and wood.

ZIRCONIA

USE  
WET | DRY

**Applications:** For finishing castings and wide belt sanders for finishing flat stock. Also used for floor sanding.

**Key Markets:** Foundries, Hand Tools, Cutlery and Machine Shops. Floor Sanding.

PRODUCT	WIDTH	TYPE	GRAIN TYPE	BACKING	BOND	COATING	ANTISTATIC
XZ677	54"	Cloth	Zirconia	X	R/R	Closed Coat	No

**GRITS:**

24, 36, 40, 50, 60, 80, 100, 120

# ZA & SC PAPER MATERIALS

## ZA & SC Paper Backed Materials

### New ZP320G

#### Zirconia Aluminum Oxide, Paper, "G" Weight Backing

- Zirconia grain for aggressive cutting action and long working life.
- Engineered for low dust emission, high tear resistance and durable edges.

**Applications:** Hardwood floor sanding, steel floors, parquet wood.

**Key Markets:** Flooring.

**ZIRCONIA AO**  
Aluminum Oxide



PRODUCT	WIDTH	TYPE	GRAIN TYPE	BACKING	BOND	COATING	ANTISTATIC
ZP320G	65"	Paper	Zirconia Aluminum Oxide	G	R/R	Closed Coat	No

**GRITS:**  
24, 36, 40, 50, 60, 80, 100, 120

### New SP40F

#### Silicon Carbide, Paper, "F" Weight Backing

- Silicon Carbide, Paper, "F" Weight Backing
- Antistatic treatment helps minimize and/or eliminate dust build up in the machine.
- Used on wide belt sanders, long belt and edge belt sanders.
- For wood, lacquers, plastic, stone and glass.

**Applications:** For aggressive stock removal.

**SILICON CARBIDE**



PRODUCT	WIDTH	TYPE	GRAIN TYPE	BACKING	BOND	COATING	ANTISTATIC
SP40F	73"	Paper	Silicon Carbide	F	R/R	Closed Coat	Yes

**GRITS:**  
24, 36, 40, 50, 60, 80, 100, 120

## "F" Weight Silicon Carbide Paper Backed Belts

### B547 & B547W - Superior Finish!

#### Silicon Carbide, Paper, "F" Weight Backing

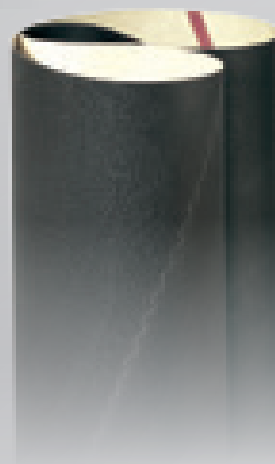
- B547 up to 56" wide belts.  
B547W up to 66" wide belts.
- Antistatic treatment helps minimize and/or eliminatesanding dust build up in the machine.
- Best choice for a superior finish.
- Used on wide belt sanders, stroke sanders and cross belts for wide belt sanders.
- For hard and soft woods.  
For finishing stainless and titanium sheets.

**SILICON CARBIDE**



**Applications:** For medium and fine sanding of wood. Also used for sealer sanding.

**Key Markets:** Cabinets, furniture, wood doors, veneer plants and metal polishing.



B547

PRODUCT	WIDTH	TYPE	GRAIN TYPE	BACKING	BOND	COATING	ANTISTATIC
B547	53", 56"	Paper	Silicon Carbide	F	R/R	Closed Coat	Yes
B547W	65"	Paper	Silicon Carbide	F	R/R	Closed Coat	Yes

**GRITS - While Supplies Last:**  
24, 36, 40, 50, 60, 80, 100

**B547 / B547W GRITS:**  
120, 150, 180, 220, 240,  
280, 320, 400, 600



## "Y & X" Weight Silicon Carbide Cloth Backed Belts

Silicon carbide grain is ideal for grinding non-ferrous materials such as brass, copper, bronze and aluminum.

### P548W

Silicon Carbide, Polyester, "Y" Weight Backing

- Special treatment on the back of the belt extends the life of the smoothing bar.
- Good for calibrating dimensions and consistent medium and fine finish sanding.
- Antistatic treatment helps minimize and/or eliminate sanding dust build up in the machine.
- Longer Life Cycle with high durability.
- Used on wide belt sanders.
- For particle board, MDF, HDF, plywood and leather.



SILICON CARBIDE

USE  
WET | DRY



#1 Seller!

P548W

**Applications:** Sanding of particle board, MDF, HDF and plywood for calibrating dimensions, medium and fine finish sanding. Also used for polishing Stainless Steel Coils and Sheets to generate acceptable finish. Finishing leather hides before tanning.

**Key Markets:** Particle board, MDF, HDG and Plywood Mills. For Metal Polishing, Metal Service Centers, Leather Tanning operations.

PRODUCT	WIDTH	TYPE	GRAIN TYPE	BACKING	BOND	COATING	ANTISTATIC
P548W	67"	Cloth	Silicon Carbide	Y	R/R	Closed Coat	Yes

GRITS:

40, 50, 60, 80, 100, 120, 150, 180, 220

### PC221

Silicon Carbide, Polyester, "Y & X" Weight Backing

- Y-weight for grits 80 & coarser.  
X-weight for grits 100 & finer.
- High cutting performance and long life
- Used on backstand grinders, slack of belt grinder, platen grinder, wide belt sanders
- For surface finishing of flat materials and edge sanding of glass.  
Wide belt sanding of white woods.

SILICON CARBIDE

USE  
WET | DRY



**Applications:** Glass, Ceramics, Solid Surface materials, Concrete Block, Non-ferrous Metals, Titanium, Stainless Steel and Marble and White woods.

**Key Markets:** Glass fabricators, sheet polishers, solid surface manufacturers and concrete/stone manufacturers.

PRODUCT	WIDTH	TYPE	GRAIN TYPE	BACKING	BOND	COATING	ANTISTATIC
PC221	54"	Cloth	Silicon Carbide	Y & X	R/R	Closed Coat	No

GRITS:

16, 24, 36, 40, 50, 60, 80, 100, 120, 150, 180, 220, 240, 280, 320, 400, 600

### XC227

Silicon Carbide, Polyester, "X" Weight Backing

- Long life, fast cut and good finish.
- Used on backstand grinders, wide belt sanders, centerless grinder, slack of belt grinder, platen grinder.
- For flat and edge sanding.

SILICON CARBIDE

USE  
WET | DRY



**Applications:** Glass, ceramics, solid surface materials, concrete block, non-ferrous metals, titanium, stainless steel, marble and white woods.

**Key Markets:** Glass fabricators, sheet polishers, solid surface manufacturers and concrete stone manufacturers.

PRODUCT	WIDTH	TYPE	GRAIN TYPE	BACKING	BOND	COATING	ANTISTATIC
XC227	54"	Cloth	Silicon Carbide	X	R/R	Closed Coat	No

GRITS:

24, 36, 40, 50, 60, 80, 100, 120, 150, 180, 320, 400, 600



# SILICON CARBIDE MATERIAL

## "Y & X" Weight Cloth Backed Belts (continued)

### S27

#### Silicon Carbide, Polyester, "Y" Weight Backing

- Designed to cut freely and does not readily load. Even surface finish.
- Used on wide belt sanders.
- Applications - For calibrating, medium and fine sanding wood panels.

SILICON CARBIDE



S27

**Applications:** Particleboard, MDF, HDF and White Woods.

**Key Markets:** particle board, MDF, HDF and plywood mills.

PRODUCT	WIDTH	TYPE	GRAIN TYPE	BACKING	BOND	COATING	ANTISTATIC
S27	53"	Cloth	Silicon Carbide	Y	R/R	Closed Coat	No

GRITS:

40, 50, 60, 80, 100, 120 150, 180

### S181

#### Silicon Carbide, Polyester, "Y & X" Weight Backing

- Y-weight for grits 80 & coarser.  
X-weight for grits 100 & finer.
- Long life and fast rate of cut.
- Used on backstand, wide belt, centerless, slack of belt, platen sanders and portable belt sanders.
- Applications -flat surface finishing and edge sanding.

SILICON CARBIDE



**Applications:** Glass, ceramics, sold surface material, concrete block, non-ferrous metals, titanium, stainless steel, marble and white wood.

**Key Markets:** Glass fabricators, sheet polishers, solid surface manufacturers and concrete stone manufacturers.

PRODUCT	WIDTH	TYPE	GRAIN TYPE	BACKING	BOND	COATING	ANTISTATIC
S181	53"	Cloth	Silicon Carbide	Y & X	R/R	Closed Coat	No

GRITS:

24, 50, 60, 80, 120, 150, 180,  
220, 240, 320, 400, 600

### P549 - For Sectional Belts

#### While Supplies Last / Special Order

#### Silicon Carbide, "Polyester, Y" Weight Backing

- Anti-slip treatment on the backside of the belt. Resistant to temperature and humidity.
- For use on particleboard, MDF, HDF plywood and stainless steel sheet polishing.
- Up to 128" wide sectional belts (greater than 67" up to 128").
- Y-weight 100% Polyester backing. **Closed coat.**

SILICON CARBIDE



**While  
Supplies  
Last**

**Key Markets:** Particle board, MDF and HDF Mills.

PRODUCT	WIDTH	TYPE	GRAIN TYPE	BACKING	BOND	COATING	ANTISTATIC
P549	57"	Cloth	Silicon Carbide	Y	R/R	Closed Coat	Yes

GRITS:

40, 60, 80, 100, 120



CAMEL GRINDING WHEELS



## Silicon Carbide **Cloth** Backed Belts

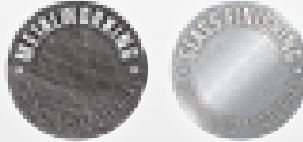
### PK777

#### Cork, Silicon Carbide, Polyester, "Y" Weight Backing

- Long life and cool cut.
- Consistent finish.
- Flat work - Stoke sander, wide belt grinders and polishing.
- Round work - Centerless grinders.
- Contour work - Backstand grinders and slack of belt grinders.
- For various metals and glass.
- Key Markets - polishing and plating, metal sheet polishers.
- Y-weight, heavy duty 100% Polyester backing.

SILICON CARBIDE  
w/CORK

USE  
WET | DRY



**Key Markets:** Polishing and plating,  
metal sheet polishers



**GRITS - While Supplies Last:** 600

**GRITS:**  
320, 400, 800

PRODUCT	WIDTH	TYPE	GRAIN TYPE	BACKING	BOND	COATING	ANTISTATIC
PK777	54"	Cloth	Silicon Carbide w/Cork	Y	R/R	Closed Coat	No

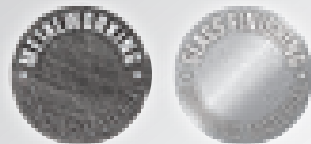
### PK777-Cork

#### Cork, Silicon Carbide, Polyester, "X" Weight Backing

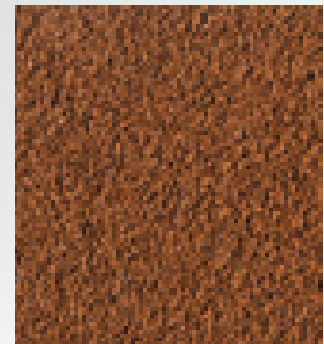
- Long life and cool cut.
- Consistent, fine polished finish.
- Flat work - Stoke sander, wide belt grinders and polishing.
- Round work - Centerless grinders.
- Contour work - Backstand grinders and slack of belt grinders.
- For glass.
- Y-weight, heavy duty 100% Polyester backing.

CORK

USE  
WET | DRY



**Key Markets:** Glass fabricators.



PK777

PRODUCT	WIDTH	TYPE	GRAIN TYPE	BACKING	BOND	COATING	ANTISTATIC
PK777	54"	Cloth	Cork	X	R/R	Cork Coat	No

**GRITS:**  
CORK

### YC635 - **Discontinued**

#### Silicon Carbide, Polyester, "Y" Weight Backing

- ONLY available in 24 grit.
- For grinding stone and concrete block.
- Up to 54" wide belts.
- YC635 is replaced by **PC221** (see page 20).

SILICON CARBIDE

USE  
WET

**While  
Supplies  
Last**

PRODUCT	WIDTH	TYPE	GRAIN TYPE	BACKING	BOND	COATING	ANTISTATIC
YC635	54"	Cloth	Silicon Carbide	Y	R/R	Closed Coat	No

**GRITS:**  
24

# CERAMIC MATERIAL

## "Y" Weight Compact Grain Cloth Backed Belts

Compact grain is ideal for aggressive cutting applications and hard-to-grind materials.

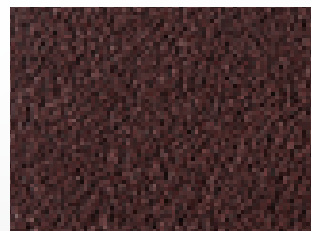
### PG730

Compact Grain – Aluminum Oxide,  
Polyester, "Y" Weight Backing

- Up to 6 times longer life than conventional abrasives for increased productivity.
- Finishing chromium plated round parts. Grinding tube weld seams.
- Grinding of strip coils, alloys, Non Ferrous and general metals.
- Flat parts with stroke sanders, grinders & polishers. Centerless Grinding.
- Used on backstand grinders, slack of belt and Dynaflex.
- Size coating with power binder provides increased productivity.

COMPACT GRAIN  
ALUMINUM OXIDE

USE  
WET



PG730

PRODUCT	WIDTH	TYPE	GRAIN TYPE	BACKING	BOND	COATING
PG730	54"	Cloth	Compact Grain	Y	R/R	Closed Coat

**GRITS:**  
80, 120, 180, 240, 320, 400, 600

### PG830

Compact Grain – Aluminum Oxide,  
Polyester, "Y" Weight Backing

- Up to 6 times longer life than conventional abrasives for increased productivity.
- Finishing chromium plated round parts. Grinding tube weld seams.
- Grinding of strip coils, alloys, Non Ferrous and general metals.
- Flat parts with stroke sanders, grinders & polishers. Centerless Grinding.
- Used on backstand grinders, slack of belt and Dynaflex.
- Size coating with an active filler provides increased productivity.

COMPACT GRAIN  
ALUMINUM OXIDE

USE  
DRY



**GRITS - While Supplies Last:** 800

PRODUCT	WIDTH	TYPE	GRAIN TYPE	BACKING	BOND	COATING
PG830	54"	Cloth	Compact Grain	Y	R/R	Closed Coat

**GRITS:**  
80, 120, 180, 240, 320,  
400, 600

### PX220

Compact Grain – Silicon Carbide,  
Polyester, "Y" Weight Backing

- Up to 6 times longer life than conventional abrasives for increased productivity. Size coating with reactive filler.
- For titanium alloys, carbon steel, cast steel, heat treated steel & stainless steel.
- Used on backstand and wide belt grinders, centerless grinders.

COMPACT GRAIN  
SILICON CARBIDE

USE  
WET | DRY



**PG730, PG830, PX220 Note:**  
At first stock removal is slightly  
lower than convention abrasives.

**GRITS - While Supplies Last:** 1000

PRODUCT	WIDTH	TYPE	GRAIN TYPE	BACKING	BOND	COATING
PX220	54"	Cloth	Compact Grain	Y	R/R	Closed Coat

**GRITS:**  
120, 180, 240, 320, 400, 600, 800

# CLOTH

## "Y & J" Weight Ceramic Alumina Cloth Backed Belts

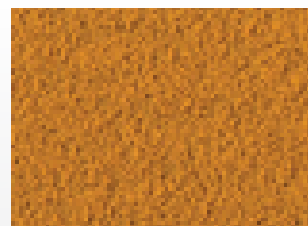
### PCERY

#### Ceramic, Polyester, "X" Weight Backing

- Self-sharpening grain & grinding aid for cool cutting on aggressive applications.
- Ideal for backstand, flat and cylindrical grinding.
- For ferrous, non-ferrous or alloyed metals.
- Y-weight 100% Polyester backing.

#1 Seller!

CERAMIC



PCERY

PRODUCT	WIDTH	TYPE	GRAIN TYPE	BACKING	BOND
PCERY	57"	Cloth	Ceramic	X	R/R

GRITS:

36, 50, 60, 80, 120

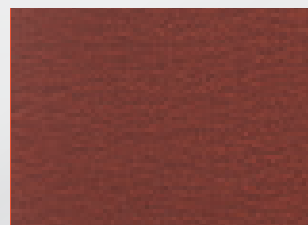
### PS999

#### Ceramic, Polyester, "Y" Weight Backing

- Two coatings of grinding aid for severe grinding applications.
- High stretch resistant and very stable backing material provides higher cut rates and cooler grinding temperatures.
- Low grinding pressure and lower overall costs.
- Used on backstand grinders, wide belt sanders, power pack machines, platen grinder, portable file grinders.
- Materials: Stainless Steel, Cobalt and Nickel Alloys, Titanium and Carbon Steel. Dry use only.
- 80/20 blend of grains.

CERAMIC

USE DRY



PS999

**Applications:** Heavy stock removal on welded seams and castings. File machines for deburring.

**Key Markets:** Investment cast foundries, jet and turbine blade manufacturers, hand tools, stainless steel equipment.

PRODUCT	WIDTH	TYPE	GRAIN TYPE	BACKING	BOND
PS999	54"	Cloth	Ceramic	Y	R/R

GRITS:

24, 36, 40, 50, 60, 80, 100, 120

### JS997

#### Ceramic, Polyester/Cotton, "J" Weight Backing

- Super size coating with a grinding aid for very cool and fast cutting action. Long life.
- Ceramic and premium aluminum oxide mixture.
- Works with low grinding pressure.
- Use on back stand and portable grinders
- For deburring of casting and forgings.
- For polishing parts that require belt flexibility.
- Used on backstand grinders, portable file tools.
- For Stainless Steel, Nickel Alloys, Low Carbon Steel
- For cast iron, nickel and stainless steel. Dry use only.

CERAMIC

USE DRY



**Applications:** Deburring of castings and forgings and polishing of parts that require a flexible belt.

**Key Markets:** Polishing and Plating, Jet Blades, Hand Tools.

PRODUCT	WIDTH	TYPE	GRAIN TYPE	BACKING	BOND
JS997	54"	Cloth	Ceramic	J	R/R

GRITS:

60, 80, 100, 150, 180, 220



# GRIT SIZE COMPARISON

## CAMI (US Graded)

## FEPA (European Graded)

MICRON	AVG. DIA.	MESH	MESH	AVG. DIA.	MICRON
0.30	.0000118				
0.50	.0000197				
1.00	.0000394				
2.00	.0000787				
3.00	.000118				
4.00	.000158				
5.00	.000197				
6.00	.000236				
6.50	.000260	1200			
			P2500	.000330	8.40
9.00	.000350				
9.20	.000360	1000			
			P2000	.000410	10.30
12.00	.000470				
12.20	.000480	800			
			P1500	.000500	12.60
15.00	.000590				
16.00	.000620	600	P1200	.000600	15.30
19.70	.000770	500	P1000	.000710	18.30
20.00	.000790				
23.60	.000920	400	P800	.000850	21.80
25.00	.000980				
28.80	.001120	360	P600	.001000	25.75
30.00	.001180				
			P500	.001180	30.20
36.00	.001400	320	P400	.001370	35.00
40.00	.001575				
			P360	.00158	40.50
44.00	.00172	280			
45.00	.00177		P320	.00180	46.20
50.00	.00197				
53.50	.00209	240	P280	.00204	52.50
55.00	.00217				
			P240	.00230	58.50
66.00	.00257	220	P220	.00254	65.00
78.00	.00304	180	P180	.00304	78.00
93.00	.00363	150	P150	.00378	97.00
116.00	.00452	120	P120	.00495	127.00
141.00	.00550	100	P100	.00608	156.00
192.00	.00749	80	P80	.00768	197.00
268.00	.01045	60	P60	.01014	260.00
351.00	.01390	50	P50	.01271	326.00
428.00	.01690	40	P40	.01601	412.00
535.00	.02087	36	P36	.02044	524.00
638.00	.02488	30	P30	.02426	622.00
715.00	.02789	24	P24	.02886	740.00
905.00	.03535	20	P20	.03838	984.00
1320.00	.05148	16	P16	.05164	1324.00
1842.00	.07174	12	P12	.06880	1764.00

GRIT SIZE  
COMPARISON CHART



7525 N. Oak Park Ave., Niles, IL 60714

Phone: 800•447•4248

Fax: 800•447•3731



7100 Village Dr., Buena Park, CA 90621

Phone: 800•755•2042

Fax: 714•994•4723

