

*2018-2019 Product Catalog*



*We protect your most valuable asset...your people.*







# GATEWAY SAFETY

## ABOUT GATEWAY SAFETY

Family-owned since 1944, Gateway Safety is one of the most respected manufacturers of personal safety equipment in the United States. We design and produce 'above-the-shoulders' personal protective equipment, including eye, face, head, hearing and disposable respiratory protection. Gateway Safety focuses on providing high-quality safety products that are stylish and comfortable, so workers will put them on and keep them on.

The entire team at Gateway Safety works hard to:

- Design and manufacture high-quality, innovative safety solutions.
- Deliver unmatched service and support to distribution and end-user customers.
- Keep our operating costs low to provide value-priced products.

These goals inspire our daily excellence in providing exceptional safety products backed by superior service. Gateway Safety is proud to be your reliable and long-lasting partner for industrial safety equipment.

## LEADERS LEAD

Gateway Safety takes its commitment to quality very seriously, producing products made with high-quality materials and verifying this quality with third-party testing programs. Few of our competitors can make this claim. We create innovative designs that address the needs of workers who wear safety equipment on a daily basis. Our designs are based on style and comfort, the two key components of safety compliance. Many of our products are patent-protected, and we are proud to be recipients of numerous awards for product design and innovation.

### Eye Injuries

Every day in the U.S., 2,000 workers incur a job-related eye injury that requires medical treatment. One-third of these injuries are treated in hospital emergency departments, and more than 100 of these injuries result in one or more days of lost work. Yet, according to the American Academy of Ophthalmology, 90% of eye injuries could have been prevented by wearing safety eyewear.



Gateway Safety provides award-winning, patent-protected products.

**2017 Readers' Choice Awards** — StarLite® FOAMPRO™

**2016 Attendee Choice Awards** — Metro™ - Pink Camo

**2015 New Product of the Year** — Swap® MAG

## OUR MISSION: WORKER SAFETY

Of course, worker safety is at the heart of Gateway Safety's mission. There's nothing quite as inspiring as hearing the stories shared by users of Gateway Safety products. The following are real-life stories of people in situations where our products prevented a more serious eye injury or potentially saved a life. These success stories validate the commitment we have made to quality. Check out a couple of these stories below...

### Real-Life Stories That Inspire Our Daily Excellence



A professional logger and avid StarLite® user was working with a chainsaw in Alaska when suddenly, the chainsaw kicked back and struck him in the face. Though he needed stitches along his forehead and nose, his StarLite glasses "saved the day!"



Robert was completing routine maintenance on an HVAC unit when a high-pressure hose burst. Freon, dirt and debris went flying everywhere, along with a screw that exploded directly into his safety glasses. The screw became embedded in his safety glasses, but nothing else got through.

**"StarLite® safety glasses saved my butt! At first, I didn't even realize what had happened... that's when I noticed something strange in my field of vision. I'm not sure that many glasses would have held."**

**Robert M. - Houston, TX**



### GATEWAY SAFETY IS A PROUD MEMBER OF THE FOLLOWING ASSOCIATIONS:

**ASSE**  
American Society of Safety Engineers  
[www.asse.org](http://www.asse.org)

**GCSC**  
Greater Cleveland Safety Council  
[www.greatercleveland.safetycouncil.com](http://www.greatercleveland.safetycouncil.com)

**IBC**  
Industrial Supply Plus  
[www.industrialbuyers.com](http://www.industrialbuyers.com)

**NetPlus Alliance**  
[www.netplusalliance.com](http://www.netplusalliance.com)

**ProGroup**  
[www.pro-group.com](http://www.pro-group.com)

**ISEA**  
International Safety Equipment Association  
[www.safetysafetyequipment.org](http://www.safetysafetyequipment.org)

**NSC**  
National Safety Council  
[www.nsc.org](http://www.nsc.org)

**STAFDA**  
Specialty Tools & Fasteners Distributors Association  
[www.stafda.org](http://www.stafda.org)

**VPPPA**  
Voluntary Protection Programs Participants' Association  
[www.vpppa.org](http://www.vpppa.org)





# HOW TO ORDER:

Please contact us for information on a Gateway Safety distribution partnership or on where to purchase Gateway Safety products in your area.

Phone: 800-822-5347

Website: [www.GatewaySafety.com](http://www.GatewaySafety.com)

Email: [Service@GatewaySafety.com](mailto:Service@GatewaySafety.com)

For more on becoming a Gateway Safety distribution partner, see page 41.

Stay in touch with us through social media:



[facebook.com/GatewaySafety](https://facebook.com/GatewaySafety)



[@GatewaySafety](https://twitter.com/GatewaySafety)



[youtube.com/GatewaySafety](https://youtube.com/GatewaySafety)



[linkedin.com/company/Gateway-Safety](https://linkedin.com/company/Gateway-Safety)

# Contents

Eye Protection.....	4
fX3™ Premium Anti-Fog.....	5
Temple Technology® .....	7
The StarLite® Family.....	9
GirlzGear® .....	11
High-End Style .....	13
Comfort & Popularity .....	15
Easy Fit, Classic Styling .....	17
Foam Favorites .....	19
Bifocal Protection .....	21
Over-the-Glasses (OTG) Protection .....	23
Visitor Spectacles.....	23
Eyewear Accessories.....	24
Impact & Splash Goggles.....	25
Welding Safety Eyewear .....	27
Face Protection.....	29
Headgear & Visors.....	30
Head Protection.....	32
Safety Helmets .....	33
Hearing Protection .....	35
Earplugs & Earmuffs.....	36
Respiratory Protection.....	37
Disposable Respirators .....	38
Workplace Security .....	39
Safety ID Lanyards .....	39
Emergency Eyewash.....	39
Faucet-Mounted Eyewash Station.....	39
Product Customization.....	40
Imprinting & Private Labeling.....	40
Becoming a Gateway Safety Distribution Partner .....	41
Distributor Support.....	42
Marketing Tools .....	42

Gateway Safety products are warranted to be free from manufacturing defects. Consult safety professionals, or refer to safety standards, for determination of the correct product for the use contemplated or the manner of such use. EXCEPT AS SET FORTH IN THE FIRST SENTENCE IN THIS PARAGRAPH, GATEWAY SAFETY MAKES NO EXPRESS WARRANTY WITH RESPECT TO ANY OF ITS PRODUCTS. GATEWAY SAFETY FURTHER DISCLAIMS ALL IMPLIED WARRANTIES, INCLUDING THE WARRANTY OF MERCHANTABILITY AND THE IMPLIED WARRANTY OF FITNESS FOR A PARTICULAR PURPOSE. This limited warranty shall not apply to any defects that have been caused by customer's failure to follow Gateway Safety's instructions; customer's abuse, misuse, negligence or error; or accident or actions of third parties and other events outside of Gateway Safety's control. Gateway Safety is not and shall not be liable for any incidental or consequential damages, and the exclusive remedy during the warranty period is limited to Gateway Safety repairing or replacing the defective product. ©2018 Gateway Safety, Inc. Printed in U.S.A.

# EYE PROTECTION

Safety Glasses | Foam-Lined Safety Eyewear | Bifocal Safety Eyewear  
OTG Safety Glasses | Visitor Safety Glasses | Safety Goggles  
Welding Safety Eyewear

## EYE PROTECTION ICONS TO LOOK FOR

Throughout the Eye Protection section of this catalog, you will find a number of icons. Each icon packs a lot of information into a little bit of space. Don't take them lightly. When choosing personal protection, consider whether the "mark" is appropriate for your application.



When you see the **ANSI 287.1+ Certified** icon, you know that both Gateway Safety and an independent, third-party laboratory regularly test and certify that this product meets or exceeds the ANSI 287.1+ standard.



When you see the **CSA 294.3 Certified** icon, you know that both Gateway Safety and an independent, third-party laboratory regularly test and certify that this product meets or exceeds the CSA 294.3 standard.



When you see the **Meets ANSI 287.1+** icon, you know that Gateway Safety regularly tests and certifies that this product meets or exceeds the ANSI 287.1+ standard.



When you see the **Meets CSA 294.3** icon, you know that Gateway Safety regularly tests and certifies that this product meets or exceeds the CSA 294.3 standard.



When you see the **FX3** icon, you know this product is available with our premium fog-fighter, which is longer-lasting and more effective than competing anti-fog products.



When you see the **Meets U.S. Military Ballistic Impact Requirements** icon, you know that Gateway Safety tests and certifies that this product meets or exceeds the ballistic impact resistance requirements for eyewear in US Military Performance Specification MIL PRF-32432(GL).



When you see the **c-UL-us LISTED** icon, you know that Underwriters Laboratories is the independent, third-party agency that has certified that this product meets the ANSI 287.1+ and CSA 294.3 standards. Confirmation can be found in their Online Certifications Directory at [www.ul.com](http://www.ul.com).



When you see the **UL LISTED** icon, you know that Underwriters Laboratories is the independent, third-party agency that has certified that this product meets the ANSI 287.1+ standard. Confirmation can be found in their Online Certifications Directory at [www.ul.com](http://www.ul.com).



When you see the **99.9% UV-A, UV-B and UV-C Protection** icon, you know that Gateway Safety regularly tests and certifies that this product blocks 99.9% of UV-A, UV-B and UV-C radiation up to 380nm.

## LENS SELECTION CHART

More than ornamental, Gateway Safety lens options serve a specific function. This lens selection chart provides a general guideline for use. However, always consult your safety director to determine the proper lens option for each application. Unless otherwise noted, all Gateway Safety lenses feature an anti-scratch coating for extra durability and block 99.9% of UV-A, UV-B and UV-C light, up to 380nm.



Clear  
VLT 92%

These untinted lenses are ideal for indoor and general-purpose applications.



Amber  
VLT 89%



Pacific Blue  
VLT 62%



Orange  
VLT 50%



Vermilion  
VLT 50%



Gray  
VLT 14%



Mocha  
VLT 23%

These tinted lenses significantly reduce bright light to minimize eye strain and fatigue.



Clear In/Out Mirror  
VLT 50%



Bronze Mirror  
VLT 50%



Pink Mirror  
VLT 37%

These lenses reflect some bright light while allowing a moderate amount of light through the lens.



Red Mirror  
VLT 14%



Mocha Mirror  
VLT 14%



Gold Mirror  
VLT 14%



24K Gold Mirror  
VLT 14%



Silver Mirror  
VLT 23%



Blue Mirror  
VLT 23%



Sunset Red Mirror  
VLT 14%



Horizon Blue Mirror  
VLT 14%



Iridescent Green Mirror  
VLT 14%



Sterling Silver  
VLT 23%



Blue Light Filter  
VLT 19%

This lens helps reduce blue light exposure, which can lead to a phenomenon called "Blue Blur."



Gray Polarized  
VLT 14%

Polarized lenses reduce glare from reflected light and minimize eye strain.



IR Filter Shade 3.0  
VLT 12%



IR Filter Shade 5.0  
VLT 2%

IR filter lenses are for use around light welding, brazing or cutting applications only.

VLT (Visual Light Transmittance) is the amount of visible light (+/- 2%) that passes through the lens.





# THE CLEAR CHOICE. GATEWAY SAFETY'S NEW fx3™ PREMIUM ANTI-FOG

PROTECTION THAT LASTS **30X** LONGER THAN OTHER ANTI-FOG PRODUCTS

## THE fx3™ ADVANTAGE

Gateway Safety's fx3™ products are tested to the most stringent anti-fog standard that exists: EN 166. Testing shows that fx3 lenses stay fog free for more than 7 times the EN 166 standard requirement, and more than 30 times the effectiveness of other manufacturers' "anti-fog" products.

**SUPERIOR ANTI-FOG PERFORMANCE.** Engineered to fight fog better than current alternatives.

**LONGER-LASTING EFFECTIVENESS.** Adheres longer to lenses and stands up to multiple lens cleanings.

**GREATER SCRATCH RESISTANCE.** Resists scratching eight times better than standard anti-fog coatings.



Part #	Product/Description
46X9	StarLite/Clear Temples/Clear fx3 Premium Anti-Fog Lens
46X8	StarLite/Gray Temples/Gray fx3 Premium Anti-Fog Lens
28GBX9	Conqueror/Black Frame/Clear fx3 Premium Anti-Fog Lens
28USX9	Conqueror/NEW Old Glory Camo Frame/Clear fx3 Premium Anti-Fog Lens
28USX8	Conqueror/NEW Old Glory Camo Frame/Gray fx3 Premium Anti-Fog Lens
21GBX9	Swap/Black Frame/Clear fx3 Premium Anti-Fog Lens
21GBX8	Swap/Black Frame/Gray fx3 Premium Anti-Fog Lens
20GYX9	Ellipse/Gray Temples/Clear fx3 Premium Anti-Fog Lens
20GYX8	Ellipse/Gray Temples/Gray fx3 Premium Anti-Fog Lens
41CMX9	4x4/Classic Camo Frame/Clear fx3 Premium Anti-Fog Lens
41CMX8	4x4/Classic Camo Frame/Gray fx3 Premium Anti-Fog Lens
41CMX7	4x4/Classic Camo Frame/Amber fx3 Premium Anti-Fog Lens

Also ask about Gateway Safety styles featuring fx2, our standard anti-fog technology. With its excellent anti-fog performance, fx2 helps maintain a clear view when subtle swings in temperature and humidity would otherwise trigger fogging.

	COMPETITOR'S ANTI-FOG PRODUCT	fx3 PREMIUM ANTI-FOG
EN166 N TEST (8 seconds)	1-2 seconds	Over 60 seconds
STEAM TEST (30 minutes)	Fogged after 1 minute	No fogging
CLEANING TEST (15 ultrasonic lens cleanings)	Lasted 1 cleaning	Lasted 15 cleanings
ADHESION TEST (50 hours)	Coating completely peeled off	Coating still adhered to lens
WIPE TEST (30 wipes)	Fogged after 1-2 wipes	After 30 wipes, no fogging

**30X  
LONGER**



TEMPLE TECHNOLOGY®

Workers who wear safety glasses all day often complain of pinching and discomfort due to hard or tight temples. Gateway Safety's Temple Technology® products are a collection of never-before-seen safety glasses with patented temple features specially engineered to fit users more comfortably on the ears and around the head.



ELLIPSE™

Weightlessness inspires compliance. Ellipse™ offers extreme light weight and long-lasting temple comfort.

- Revolutionary, feather-light safety eyewear, weighing just 19.3 grams.
- Longer temple tips engineered to reach farther around the head to dissipate pressure.
- Soft rubber temples keep safety glasses in place without slipping.
- Available in the NEW fx3™ Premium Anti-Fog lens option, a longer-lasting, more superior anti-fog solution.

Part #	Temple	Lens
20GY80	Gray	Clear
20GY83	Gray	Gray
20BK75	Black	Amber
20GYX9	Gray	Clear fx3 Premium Anti-Fog
20GYX8	Gray	Gray fx3 Premium Anti-Fog
20GY0M	Gray	Clear In/Out Mirror
20GY8M	Gray	Silver Mirror
20BK9M	Black	Blue Mirror



Ellipse temples are longer than standard temple lengths to reach farther around the head and eliminate pinch points.



PARALLAX™

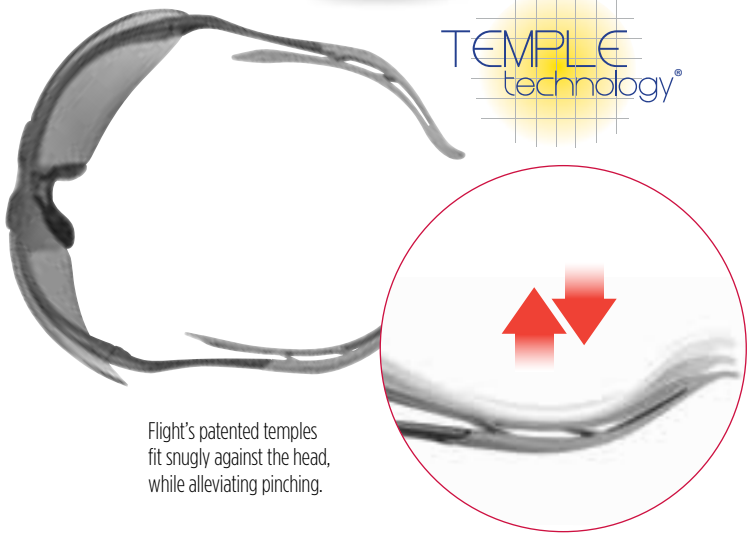
Look beyond traditional eyewear views. Parallax™ provides superior comfort with a patented, Temple Technology® design that alleviates pressure on the ears and head.

- Dual component temple design creates cushioned comfort.
- Integrated brow guard provides top protection from debris.
- Lightweight construction and soft rubber nosepiece prevents slipping.

Part #	Temple	Flex	Lens
37BK80	Clear	Black	Clear
37GY83	Gray	Gray	Gray
37BK76	Pacific Blue	Black	Pacific Blue
37BK79	Clear	Black	Clear fx2 Anti-Fog
37BK0M	Clear	Black	Clear In/Out Mirror
37GY8M	Gray	Gray	Silver Mirror
37GY9M	Blue	Gray	Blue Mirror
37PK80	Clear	Pink	Clear
37GY11	Pink	Gray	Pink Mirror



Patented two-piece temples include a flexible bottom component to alleviate pinching.



Flight's patented temples fit snugly against the head, while alleviating pinching.

FLIGHT®

Revolutionary design. Flight® is the future generation of safety eyewear, with a patented temple design that provides unparalleled comfort.

- Cushioned temple “wings” softly hug the user's head, alleviating pinching.
- Floating lens design fights fogging and provides ultramodern style.
- Lightweight construction and soft rubber nosepiece create comfortable fit.

Part #	Frame	Temple Tips	Lens
35GY80	Gray	Black	Clear
35BK83	Black	Gray	Gray
35GY75	Gray	Black	Amber
35GY79	Gray	Black	Clear fx2 Anti-Fog
35GY0M	Gray	Black	Clear In/Out Mirror
35BK8M	Black	Gray	Silver Mirror
35BK9M	Black	Gray	Blue Mirror



Gateway Safety's Flight temple earned a utility patent from the U.S. Patent and Trademark Office.

LUMINARY®

The brightest idea in protective eyewear. Luminary® has the look, fit and feel that make it one of the lightest and brightest solutions in safety eyewear.

- Ultra-lightweight design — just four-fifths of an ounce — makes it easy to wear all day, every day.
- “Super flex” temples help relieve pressure behind the ears and provide superior comfort.
- “Fingertip” nosepiece reduces slippage, so glasses stay on securely.

Part #	Temple	Inset	Lens
19GB80	Black	Clear	Clear
19GY83	Silver	Gray	Gray
19GB75	Black	Amber	Amber
19GB76	Black	Pacific Blue	Pacific Blue
19GB77	Black	Orange	Orange
19GB79	Black	Clear	Clear fx2 Anti-Fog
19GB0M	Black	Clear	Clear In/Out Mirror
19GY8M	Silver	Gray	Silver Mirror
19GB9M	Black	Blue	Blue Mirror



Super-flexible temples, ideal for big heads!

Safety Tip: Standards & Testing

Demand safety products that are **independently, third-party tested** to the appropriate product performance standards. Why? In the United States, compliance with the ANSI Z87.1+ standard is voluntary. That means any manufacturer can stamp “Z87+” on a product and call it “safe.” Gateway Safety products are independently tested and certified to meet the standard.





THE STARLITE®  
FAMILY

When StarLite® was first introduced by Gateway Safety, its style was revolutionary. The large, boxy traditional safety glasses were no match for StarLite's lightweight, modern design. StarLite quickly changed the industry and continues to deliver comfortable, stylish protection today. Each member of the StarLite family boasts the same great qualities as the original while offering its own unique features and benefits for a variety of applications.

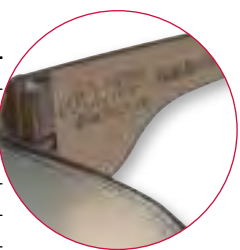


STARLITE®

Still the one. The original. The best. Popular, innovative design combines low-cost protective eyewear with all-around impact protection.

- Sleek, compact appearance and stylish unitary lens provides a wide field of vision.
- Ultra-lightweight design is easy to wear all day, helping improve safety compliance.
- Deep, universal-fit temples provide side protection identical to large side shields.

Part #	Temple	Lens
4680	Clear	Clear
4683	Gray	Gray
4686	Mocha	Mocha
4675	Amber	Amber
4676	Pacific Blue	Pacific Blue
4679	Clear	Clear fx2 Anti-Fog
4678	Gray	Gray fx2 Anti-Fog
4687	Mocha	Mocha fx2 Anti-Fog
46X9	Clear	Clear fx3 Premium Anti-Fog
46X8	Gray	Gray fx3 Premium Anti-Fog
460M	Clear	Clear In/Out Mirror
461M	Gray	Red Mirror
466M	Mocha	Mocha Mirror
467M	Gray	Gold Mirror
468M	Gray	Silver Mirror
469M	Gray	Blue Mirror
46CM80	Classic Camo	Clear
46CM83	Classic Camo	Gray
46CM75	Classic Camo	Amber



Look for the UL icon to confirm the product meets the ANSI Z87.1+ and CSA Z94.3 standards.

STARLITE® IR also available. See page 27.



Classic Camo Temples

NEW  
NEW  
NEW



STARLITE® SM

Ideal fit for smaller facial profiles. Offers the same great features and benefits as the original StarLite®, yet sized 10% smaller for men with narrow faces and for women and kids.

Part #	Temple	Lens
3680	Clear	Clear
3683	Gray	Gray
3675	Amber	Amber
3676	Pacific Blue	Pacific Blue
3679	Clear	Clear fx2 Anti-Fog
360M	Clear	Clear In/Out Mirror
368M	Gray	Silver Mirror
369M	Gray	Blue Mirror
36PK80	Pink	Clear
36PK11	Pink	Pink Mirror



10% smaller for people with narrow faces.



NEW

STARLITE® FOAM AND FOAMPRO®

Foam lining to help block debris. FOAMPRO® features an all-around, gray closed-cell foam with OptiFit™ contouring, which creates a more custom fit around the eyes. StarLite FOAM includes foam along the top of the lens, which protects from falling dust and debris.

STARLITE® FOAMPRO®

Part #	Description	Lens
46FP79	StarLite® FOAMPRO	Clear fx2 Anti-Fog
46FP78	StarLite® FOAMPRO	Gray fx2 Anti-Fog
46FP88	StarLite® FOAMPRO	Amber fx2 Anti-Fog



STARLITE® FOAM

Part #	Description	Lens
46FM79	StarLite® FOAM	Clear fx2 Anti-Fog
46FM78	StarLite® FOAM	Gray fx2 Anti-Fog



Soft foam lining is ideal for drywallers.



STARLITE® MAG

Always in focus. When reading detailed text, plans, or blueprints becomes difficult, turn to the name that you already know. Trust StarLite® MAG.

- Bifocal safety eyewear that comes in the original yet cost-effective StarLite design.
- Ultra lightweight — less than an ounce — so it's easy to wear all day, every day.
- Universal style that men and women love.



Lower bifocal magnifies small details.



STARLITE® GUMBALLS®

A little flavor, a little fun. The StarLite® design in a clear lens, with 10 different temple "flavors" in each box.

Part #	Description	Temple/Lens
4699	StarLite® Gumballs	Multi-Pack*/Clear



Part #	Description	Temple/Lens
3699	StarLite® SM Gumballs	Multi-Pack*/Clear



\*10 different temple colors



Part #	Temple	Lens	Magnification
46MC10	Clear	Clear	1.0 Diopter
46MC15	Clear	Clear	1.5 Diopter
46MC20	Clear	Clear	2.0 Diopter
46MC25	Clear	Clear	2.5 Diopter
46MC30	Clear	Clear	3.0 Diopter
46MG10	Gray	Gray	1.0 Diopter
46MG15	Gray	Gray	1.5 Diopter
46MG20	Gray	Gray	2.0 Diopter
46MG25	Gray	Gray	2.5 Diopter
46MA10	Clear	Clear fx2 Anti-Fog	1.0 Diopter
46MA15	Clear	Clear fx2 Anti-Fog	1.5 Diopter
46MA20	Clear	Clear fx2 Anti-Fog	2.0 Diopter
46MA25	Clear	Clear fx2 Anti-Fog	2.5 Diopter
46MM15	Clear	Clear In/Out Mirror	1.5 Diopter
46MM20	Clear	Clear In/Out Mirror	2.0 Diopter
46MM25	Clear	Clear In/Out Mirror	2.5 Diopter

Part #	Description	Lens/Temple
46MC99	StarLite MAG Multi-Pack*	Clear/Clear

\*Contains two of each diopter: 1.0, 1.5, 2.0, 2.5 and 3.0





# GIRLZGEAR®

Made for safety, styled and sized for women. The GirlzGear® family of products is Gateway Safety's answer to the safety needs of women in the workforce. GirlzGear includes many trusted favorites from Gateway Safety, including smaller-sized versions gathered into one collection just for women.



GirlzGear

## METRO™

From work to play ... for wear all day. A comfortable, lightweight fit, combined with a popular modern style make Metro™ look and feel less like safety eyewear and more like everyday glasses.

- Available in four versatile frame colors to meet the style preferences of men and women.
- Full-frame spectacle weighing less than one ounce for all-day wear.
- Soft, comfortable nosepiece and contoured temple tips keep glasses in place.

Part #	Frame	Lens
23PK80	Pink	Clear
23PK11	Pink	Pink Mirror
23TS80	Tortoise Shell	Clear
23TS86	Tortoise Shell	Mocha
23PC80	Pink Camo	Clear
23PC83	Pink Camo	Gray
23PC11	Pink Camo	Pink Mirror



NEW!

NEW!

NEW!

See page 14 for additional frame/lens options in Metro.

## SAFETY FOR WOMEN AT WORK

According to The National Association for Women in Construction, approximately one million of the construction industry's employees are female. Their safety depends on equipment that not only protects them, but also fits comfortably and is styled to encourage compliance. That's why Gateway Safety's GirlzGear® line, designed for the fit and style that women like, has been an important addition to the safety product industry.



## STARLITE® SM

Same great features and benefits as the original StarLite®, sized 10% smaller to fit women better.

Part #	Temple	Lens
3680	Clear	Clear
3683	Gray	Gray
3675	Amber	Amber
3676	Pacific Blue	Pacific Blue
3679	Clear	Clear fx2 Anti-Fog
360M	Clear	Clear In/Out Mirror
368M	Gray	Silver Mirror
369M	Gray	Blue Mirror
36PK80	Pink	Clear
36PK11	Pink	Pink Mirror



## STARLITE® SM GUMBALLS®

Ten different temple colors in each box — and sized 10% smaller for a better fit.

Part #	Description	Temple/Lens
3699	StarLite® SM Gumballs	Multi-Pack /Clear



## SCORPION® SM

Scorpion® SM combines a striking style with several customizable features for extra comfort. 10% smaller than the original Scorpion for a better fit.

Part #	Frame	Lens
16SM80	Black	Clear
16SM83	Black	Gray
16SM79	Black	Clear fx2 Anti-Fog
16SM0M	Black	Clear In/Out Mirror
16SM8M	Black	Silver Mirror



10% smaller for people with narrow faces.



## PARALLAX™

Look beyond traditional eyewear views. Parallax™ provides superior comfort with a patented Temple Technology® design that alleviates pressure on the ears and head.

Part #	Temple	Lens
37PK80	Clear/Pink	Clear
37GY11	Pink/Gray	Pink Mirror

See page 7 for additional lens colors in Parallax.



## SERPENT® SAFETY HELMET

Lightweight, comfortable, and durable head protection in vented and unvented shell options.

Part #	Color	Suspension
72206	Pink/Unvented	Ratchet
71206	Pink/Vented	Ratchet

See pages 33-34 for additional shell colors and applicable product standard information.



HIGH-END  
STYLE

Safety glasses don't have to look like safety glasses. Adding a little sophistication to eye protection can help improve compliance. And you'll still get the same exceptional level of protection you've come to expect from Gateway Safety products. These products are designed to reflect upscale eyewear styles — without the high-end price.



INGOT™

The high-end metal look, without the high-end price or heavy “feel” of metal-framed safety glasses. Ingot™ combines upscale styling with durability and lightweight comfort.

- A modern metallic appearance in gold or gunmetal polycarbonate frame options.
- Soft rubber temples and fingertip nosepiece for true comfort.
- The NEW 24K gold lens option provides a complete mirrored look.

Part #	Frame	Lens
34GM80	Gunmetal	Clear
34GM83	Gunmetal	Gray
34GM79	Gunmetal	Clear fX2 Anti-Fog
34GM0M	Gunmetal	Clear In/Out Mirror
34GM8M	Gunmetal	Silver Mirror
34AG80	Gold	Clear
34AG5M	Gold	Bronze Mirror
34AGKM	Gold	24K Gold Mirror



Part #	Frame	Lens
41GB80	Black	Clear
41GB83	Black	Gray
41GB75	Black	Amber
41GB79	Black	Clear fX2 Anti-Fog
41GB78	Black	Gray fX2 Anti-Fog
41GB0M	Black	Clear In/Out Mirror
41GB9M	Black	Blue Mirror
41SL2M	Silver Sport	Sunset Red Mirror
41SL3M	Silver Sport	Horizon Blue Mirror
41SL4M	Silver Sport	Iridescent Green Mirror
41SL8M	Silver Sport	Sterling Silver Mirror
41RM0M	Red Marble	Clear In/Out Mirror
41PG8M	Polished Granite	Silver Mirror
41CMX9	Classic Camo	Clear fX3 Premium Anti-Fog
41CMX8	Classic Camo	Gray fX3 Premium Anti-Fog
41CMX7	Classic Camo	Amber fX3 Premium Anti-Fog
41CMSM	Classic Camo	Bronze Mirror Lens



Red Marble Frame



Polished Granite Frame



NEW!  
NEW!  
NEW!  
NEW!

Classic Camo Frame



4X4®

Off the beaten path. With a strong four-sided frame that weighs just one ounce, 4X4® eyewear provides both durable protection and exceptional comfort.

- Available in five distinctive frame options, including new classic camo.
- Wraparound frame and dual lenses provide a dynamic style.
- Soft temple tips and inset nosepiece help ensure comfort and provide a snug, secure fit.

Safety Tip: Hazards at Home

Employees who “steal” safety glasses by taking them home to wear are actually helping employers keep healthcare costs low. Eye injuries can happen anywhere — at work, at home or at play. Safety eyewear is the first and foremost form of protection against eye injuries, keeping workers healthy and able to come back to work every day. Metro’s lightweight fit and modern style encourage real to-and-from-work compliance.



METRO™

From work to play ... for wear all day. A comfortable, lightweight fit combined with a popular modern style make Metro™ look and feel less like safety eyewear and more like everyday glasses.

- Available in four versatile frame colors to meet the style preferences of men or women.
- Full-frame spectacle weighing less than one ounce.
- Soft, comfortable nosepiece & contoured temple tips.



Part #	Frame	Lens
23CL80	Caramel	Clear
23CL86	Caramel	Mocha
23CL79	Caramel	Clear fX2 Anti-Fog
23CL5M	Caramel	Bronze Mirror
23GB80	Glossy Black	Clear
23GB83	Glossy Black	Gray
23GB0M	Glossy Black	Clear In/Out Mirror
23GB8M	Glossy Black	Silver Mirror
23PK80	Pink	Clear
23PK11	Pink	Pink Mirror
23TS80	Tortoise Shell	Clear
23TS86	Tortoise Shell	Mocha
23PC80	Pink Camo	Clear
23PC83	Pink Camo	Gray
23PC11	Pink Camo	Pink Mirror

NEW!  
NEW!  
NEW!



About Polarization

Polarized lenses are different from standard shaded lenses because they contain a special optical filter that absorbs the horizontal component of light — the “wave” of visible light that would otherwise be seen as glare — and transmits only the vertical component. 4X4® Polarized is an important outdoor eye protection solution for workers who face daily glare from light bouncing off flat, reflective surfaces such as the hood of a vehicle, a paved roadway, or even the surface of water.



Without Polarized Lenses



With Polarized Lenses

4X4® POLARIZED



Part #	Frame	Lens
41GB3Z	Glossy Black	Gray Polarized





COMFORT &  
POPULARITY

With style and comfort comes compliance. While all Gateway Safety products are designed to be stylish and comfortable, there are certain safety glasses that are just the right mix. These eyewear solutions have quickly become worker favorites. And employers are confident they'll be put on and kept on — all day long.



Classic camo frame pattern is a favorite with hunters!

CONQUEROR®

Triumph over workplace hazards. With its improved comfort features, Conqueror® is a cost-effective improvement over similar styles.

- Sleek, sporty style is an industry favorite.
- Soft, rubber nosepiece and contoured temple tips ensure all-day comfort.
- Adjustable-length eyewear retainer included with each pair.

Part #	Frame	Lens
28GB80	Glossy Black	Clear
28GB83	Glossy Black	Gray
28GB79	Glossy Black	Clear fx2 Anti-Fog
28GBX9	Glossy Black	Clear fx3 Anti-Fog
28GB0M	Glossy Black	Clear In/Out Mirror
28GB8M	Glossy Black	Silver Mirror
28GB9M	Glossy Black	Blue Mirror
28CM79	Classic Camo	Clear fx2 Anti-Fog
28CM78	Classic Camo	Gray fx2 Anti-Fog
28CM88	Classic Camo	Amber fx2 Anti-Fog
28CM5M	Classic Camo	Bronze Mirror
28US80	Old Glory Camo	Clear
28USX9	Old Glory Camo	Clear fx3 Premium Anti-Fog
28USX8	Old Glory Camo	Gray fx3 Premium Anti-Fog
28US0M	Old Glory Camo	Clear Indoor/Outdoor Mirror
28US8M	Old Glory Camo	Silver Mirror

NEW!

NEW!

NEW!

NEW!

NEW!

NEW!

CONQUEROR® IR also available.  
See page 27.



CONQUEROR® MAG

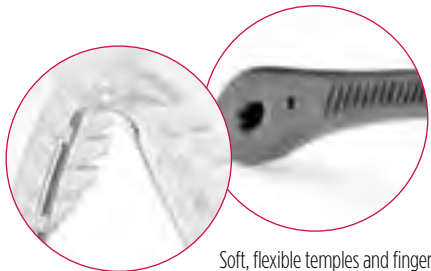
With the same commanding presence as the original, Conqueror® MAG bifocal protective eyewear helps to maximize small details while vanquishing impact hazards.

- Available in multiple diopter levels from 1.0 to 3.0.
- A soft rubber nosepiece and ergonomic contoured temple tips for all-day wear.
- Adjustable length eyewear retainer with each pair.

Part #	Frame	Lens	Magnification
28MC10	Black	Clear	1.0 Diopter
28MC15	Black	Clear	1.5 Diopter
28MC20	Black	Clear	2.0 Diopter
28MC25	Black	Clear	2.5 Diopter
28MC30	Black	Clear	3.0 Diopter
28MG15	Black	Gray	1.5 Diopter
28MG20	Black	Gray	2.0 Diopter
28MG25	Black	Gray	2.5 Diopter



Bifocal levels in 1.0, 1.5, 2.0, 2.5 and 3.0.



Soft, flexible temples and fingertip nosepiece combine to create comfortable, long-wearing eyewear.

STARLITE® SQUARED

It's hip to be squared. StarLite® SQUARED is the next generation of StarLite in a modernized style with added comfort features.

- Contemporary squared lens design is an industry favorite.
- Incredibly light, all-around impact protection for all-day wear.
- Soft, flexible nosepiece and rubber temples provide extra comfort.

Part #	Temple	Lens
4480	Clear	Clear
4483	Gray	Gray
4486	Mocha	Mocha
4475	Amber	Amber
4476	Blue	Pacific Blue
4479	Clear	Clear fx2 Anti-Fog
4478	Gray	Gray fx2 Anti-Fog
440M	Clear	Clear In/Out Mirror
441M	Gray	Red Mirror
446M	Mocha	Mocha Mirror
447M	Gray	Gold Mirror
448M	Gray	Silver Mirror
449M	Gray	Blue Mirror



VARSITY®

The first string in comfortable, stylish safety eyewear. Varsity® is a winner in any work arena.

- Unique “V”-shaped temple design for a one-of-a-kind look.
- Extremely lightweight, weighing less than one ounce.
- Soft, adjustable nosepiece reduces slippage and fits a wide range of faces.

Part #	Temple	Lens
2780	Clear	Clear
2783	Gray	Gray
2775	Amber	Amber
2777	Orange	Orange
2774	Vermilion	Vermilion
2779	Clear	Clear fx2 Anti-Fog
2778	Gray	Gray fx2 Anti-Fog
270M	Clear	Clear In/Out Mirror
278M	Gray	Silver Mirror
279M	Gray	Blue Mirror



Soft, adjustable nosepiece helps ensure proper fit.





EASY FIT,  
CLASSIC STYLING

Faces come in all shapes and sizes. That's why Gateway Safety offers multiple eye protection styles with features to ensure a more custom fit. These products offer adjustment options and the more traditional winged lens design, helping to create some of our longest-lasting style trends in eyewear.

SCORPION®

Loaded with features, Scorpion® offers the striking combination of style, comfort and safety.

- Adjustable length and ratcheting temples offer customized fit.
- Gap between frame and lens minimizes fogging.
- Free 'Scorpion's Tail' retainer helps prevent loss and damage.

Part #	Frame	Lens
16GB80	Black	Clear
16GB83	Black	Gray
16GB86	Black	Mocha
16GB75	Black	Amber
16GB69	Black	Blue Light Filter
16GB79	Black	Clear fX2 Anti-Fog
16GB78	Black	Gray fX2 Anti-Fog
16GB0M	Black	Clear In/Out Mirror
16GB1M	Black	Red Mirror
16GB6M	Black	Mocha Mirror
16GB7M	Black	Gold Mirror
16GB8M	Black	Silver Mirror
16GB9M	Black	Blue Mirror

Four-point ratchet temple adjustment for true one-size-fits-all comfort.



Fingertip nosepiece — a true must-try feature!



SCORPION® SM

Same great features as the original Scorpion®, but sized 10% smaller for men with narrow faces and for women and children.

Part #	Frame	Lens
16SM80	Black	Clear
16SM83	Black	Gray
16SM79	Black	Clear fX2 Anti-Fog
16SM0M	Black	Clear In/Out Mirror
16SM8M	Black	Silver Mirror

10% smaller for people with narrow faces.



SCORPION® MAG

Loaded with custom-fit features just like the original, with built-in bifocal magnification in 1.0, 1.5, 2.0, 2.5 and 3.0 diopters.

Bifocal helps to see small text and details.

Part #	Frame	Lens	Magnification
16MC10	Black	Clear	1.0 Diopter
16MC15	Black	Clear	1.5 Diopter
16MC20	Black	Clear	2.0 Diopter
16MC25	Black	Clear	2.5 Diopter
16MC30	Black	Clear	3.0 Diopter
16MG10	Black	Gray	1.0 Diopter
16MG15	Black	Gray	1.5 Diopter
16MG20	Black	Gray	2.0 Diopter
16MG25	Black	Gray	2.5 Diopter



HAWK®

With a sleek, swooping style, Hawk® offers durable wraparound impact protection in the workplace.

- Feather-light for ultimate comfort.
- Frameless, one-piece "winged" lens design offers extra side protection.
- Adjustable vinyl temples with grip-tight dots prevent slippage.

Part #	Temple	Lens
14GB80	Black	Clear
14GB83	Black	Gray
14GB86	Black	Mocha
14GB75	Black	Amber
14GB69	Black	Blue Light Filter
14GB79	Black	Clear fX2 Anti-Fog
14GB78	Black	Gray fX2 Anti-Fog
14GB0M	Black	Clear In/Out Mirror
14GB1M	Black	Red Mirror
14GB6M	Black	Mocha Mirror
14GB7M	Black	Gold Mirror
14GB8M	Black	Silver Mirror
14GB9M	Black	Blue Mirror



Grip-tight temples gently hug wearer's head and prevent slippage.



COBRA®

Poised to protect against workplace dangers, Cobra® strikes a balance between comfort and safety.

- Sleek design features silky, rubberized coating on nylon frame.
- Soft, flexible earpieces and nosepiece provide comfort without pinching or slipping.
- One-piece polycarbonate design offers two distinct, wide viewing areas.

Part #	Frame	Lens
15GB80	Black	Clear
15GB83	Black	Gray
15GB86	Black	Mocha
15GB75	Black	Amber
15GB69	Black	Blue Light Filter
15GB79	Black	Clear fX2 Anti-Fog
15GB78	Black	Gray fX2 Anti-Fog
15GB0M	Black	Clear In/Out Mirror
15GB7M	Black	Gold Mirror



STROBE™

With a traditional look, Strobe™ is a cost-effective safety eyewear solution that still offers serious protection.

- Large integrated side shields provide all-around protection.
- Rugged yet lightweight, with adjustable temples for maximum comfort.
- Available in black, blue and the patriotic "freedom" frame options.

Part #	Frame	Lens
49GB80	Black	Clear
49GB83	Black	Gray
49GB75	Black	Amber
49GB79	Black	Clear fX2 Anti-Fog
49GB7M	Black	Gold Mirror
49RB80	Blue	Clear
49RB83	Blue	Gray
49RB79	Blue	Clear fX2 Anti-Fog
49US80	Freedom	Clear
49US83	Freedom	Gray
49US79	Freedom	Clear fX2 Anti-Fog



STROBE™ IR also available. See page 27.



Freedom Frame



## FOAM FAVORITES

Eye injuries can also be caused by smaller particles, and Gateway Safety manufactures these specialty foam-lined products to provide extra protection from dirt and debris. Some of our foam-lined safety eyewear provide goggle-like protection, and some offer true goggle protection in a modern, lightweight style.



### SWAP®

Glasses to goggles in just a snap. Swap® provides two products in one to meet different workplace needs and user preferences.

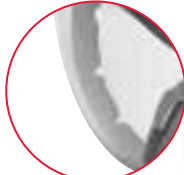
- Temples and head strap included, which can be switched out with the simple push of a button.
- Foam-lined frame helps block dust and debris, with venting channels to minimize fogging.
- Adjustable head strap for custom fit.

Part #	Frame	Lens
21GB80	Black/Foam Edge	Clear
21GB79	Black/Foam Edge	Clear fx2 Anti-Fog
21GB78	Black/Foam Edge	Gray fx2 Anti-Fog
21GB88	Black/Foam Edge	Amber fx2 Anti-Fog
21GB0F	Black/Foam Edge	Clear In/Out Mirror fx2 Anti-Fog
21GB9F	Black/Foam Edge	Blue Mirror fx2 Anti-Fog
21GBX9	Black/Foam Edge	Clear fx3 Premium Anti-Fog
21GBX8	Black/Foam Edge	Gray fx3 Premium Anti-Fog

NEW!  
NEW!



Temples to strap  
in seconds flat!



Soft foam controls  
dust and perspiration.



### SWAP® MAG

The same exceptional features as the original Swap®, now in a bifocal version.

Part #	Frame	Lens	Magnification
21MA15	Black/Foam Edge	Clear fx2 Anti-Fog	1.5 Diopter
21MA20	Black/Foam Edge	Clear fx2 Anti-Fog	2.0 Diopter
21MA25	Black/Foam Edge	Clear fx2 Anti-Fog	2.5 Diopter
21MB15	Black/Foam Edge	Gray fx2 Anti-Fog	1.5 Diopter
21MB20	Black/Foam Edge	Gray fx2 Anti-Fog	2.0 Diopter
21MB25	Black/Foam Edge	Gray fx2 Anti-Fog	2.5 Diopter



Bifocal options in  
1.5, 2.0 and 2.5 diopters.



AVAILABLE  
THIS JUNE!

### SILVERTON™\*

With a sleek industrial design, Silverton™ delivers two versions of foam-lined protection – either with temples or a head strap – for the dustiest environments.

- OptiFit™ foam lining features a tapered design for a better seal.
- Venting channels along foam minimize fogging.
- Two options: choose the temples version for the versatility of a spectacle, or choose the adjustable strap version for a more goggle-like fit.

Soft foam controls  
dust and perspiration.

OptiFit™

Foam height increases near the edge of the lens,  
creating a more custom fit and better seal.

Part #	Frame	Temples/Strap	Lens
22GY80	Gray	Temples	Clear
22GY79	Gray	Temples	Clear fx2 Anti-Fog
22GY78	Gray	Temples	Gray fx2 Anti-Fog
22GY0F	Gray	Temples	Clear In/Out Mirror fx2 Anti-Fog
22ST79	Gray	Strap	Clear fx2 Anti-Fog
22ST78	Gray	Strap	Gray fx2 Anti-Fog



NEW

### STARLITE® FOAM AND FOAMPRO®

Foam lining helps to block debris. FOAMPRO® features an all-around, closed-cell foam with OptiFit™ contouring, which creates a more custom fit around the eyes. StarLite FOAM includes foam along the top of the lens, which protects from falling dust and debris.

OptiFit™  
Foam height increases near the edge of the lens,  
creating a more custom fit and better seal.

Soft foam lining is  
ideal for drywallers.

### STARLITE® FOAMPRO®

Part #	Description	Lens	Magnification
46FP79	StarLite® FOAMPRO	Clear fx2 Anti-Fog	
46FP78	StarLite® FOAMPRO	Gray fx2 Anti-Fog	
46FP88	StarLite® FOAMPRO	Amber fx2 Anti-Fog	
46MF15	StarLite® FOAMPRO MAG	Clear fx2 Anti-Fog	1.5 Diopter
46MF20	StarLite® FOAMPRO MAG	Clear fx2 Anti-Fog	2.0 Diopter



### STARLITE® FOAM

Part #	Description	Lens
46FM79	StarLite® FOAM	Clear fx2 Anti-Fog
46FM78	StarLite® FOAM	Gray fx2 Anti-Fog



### Flame Resistance

All Gateway Safety foam-lined safety eyewear features foam that is flame resistant.

### WHEELZ® FOAM

Contemporary goggle protection for those who like to work hard, Wheelz® is lightweight and stylish.

- Compact frame is more comfortable than traditional bulky goggles.
- Whirlwind™ venting system minimizes fogging by circulating air through the optical chamber.
- Elastic head strap can easily be adjusted to ensure a safe, snug fit.

Part #	Frame	Lens
4589P	Black/Foam Edge	Clear fx2 Anti-Fog
4588P	Black/Foam Edge	Gray fx2 Anti-Fog

See the complete line of Wheelz goggles on page 25.



Wheelz' clear lens  
with foam edge blocks debris  
and absorbs perspiration.





BIFOCAL  
PROTECTION

It's a fact that the American workforce is getting older, and many workers, as they age, begin to experience reduced visual capacity. For those same workers who require eye protection on the job yet need to see things up close, bifocal safety eyewear is an ideal solution. Gateway Safety offers a selection of bifocal eye protection in several popular styles that allow workers to read or see small parts more clearly, without removing their safety eyewear.



Bifocal feature helps to enhance small details.

STARLITE® MAG

- Always in focus. The same great design as the original StarLite®, with built-in bifocal magnification.
- Large selection of diopter strengths and lens options available.
  - Incredibly light, weighing less than one ounce.
  - Deep, universal-fit temples provide wraparound side protection.

Part #	Temple	Lens	Magnification
46MC10	Clear	Clear	1.0 Diopter
46MC15	Clear	Clear	1.5 Diopter
46MC20	Clear	Clear	2.0 Diopter
46MC25	Clear	Clear	2.5 Diopter
46MC30	Clear	Clear	3.0 Diopter
46MG10	Gray	Gray	1.0 Diopter
46MG15	Gray	Gray	1.5 Diopter
46MG20	Gray	Gray	2.0 Diopter
46MG25	Gray	Gray	2.5 Diopter
46MA10	Clear	Clear fx2 Anti-Fog	1.0 Diopter
46MA15	Clear	Clear fx2 Anti-Fog	1.5 Diopter
46MA20	Clear	Clear fx2 Anti-Fog	2.0 Diopter
46MA25	Clear	Clear fx2 Anti-Fog	2.5 Diopter
46MM15	Clear	Clear In/Out Mirror	1.5 Diopter
46MM20	Clear	Clear In/Out Mirror	2.0 Diopter
46MM25	Clear	Clear In/Out Mirror	2.5 Diopter

Part #	Description	Lens/Temple
46MC99	StarLite® MAG Multi-Pack*	Clear/Clear

\*Contains two of each diopter: 1.0, 1.5, 2.0, 2.5 and 3.0



Not sure of what diopter level your customers will want? Need a trial of each magnification option for your workers? Try the StarLite MAG Multi-Pack. One box contains two of each diopter in a clear lens.

Aging Workforce

It is no secret that as we age, our eyesight deteriorates. Workers who remove their safety glasses — even for a second — to put non-safety readers on to read instructions, gauges, manuals and other small print are putting themselves at risk. Bifocal safety eyewear is one of the fastest-growing segments in eye protection. Ask your Gateway Safety sales representative to give you the full tour of our MAG lineup.



CONQUEROR® MAG

- With the same commanding presence as the original, Conqueror® MAG bifocal protective eyewear helps to maximize small details while vanquishing impact hazards.
- A soft rubber nosepiece and ergonomic, contoured temple tips for all-day wear.
  - Adjustable-length eyewear retainer included with each pair.

Part #	Frame	Lens	Magnification
28MC10	Black	Clear	1.0 Diopter
28MC15	Black	Clear	1.5 Diopter
28MC20	Black	Clear	2.0 Diopter
28MC25	Black	Clear	2.5 Diopter
28MC30	Black	Clear	3.0 Diopter
28MG15	Black	Gray	1.5 Diopter
28MG20	Black	Gray	2.0 Diopter
28MG25	Black	Gray	2.5 Diopter



SCORPION® MAG

- Loaded with custom features like the original Scorpion®, with built-in bifocal magnification.
- Adjustable-length, ratcheting temples offer customized fit.
  - Free “Scorpion’s Tail” retainer helps prevent loss and damage.

Part #	Frame	Lens	Magnification
16MC10	Black	Clear	1.0 Diopter
16MC15	Black	Clear	1.5 Diopter
16MC20	Black	Clear	2.0 Diopter
16MC25	Black	Clear	2.5 Diopter
16MC30	Black	Clear	3.0 Diopter
16MG10	Black	Gray	1.0 Diopter
16MG15	Black	Gray	1.5 Diopter
16MG20	Black	Gray	2.0 Diopter
16MG25	Black	Gray	2.5 Diopter



SWAP® MAG

- Providing foam-lined, anti-fog protection in either a spectacle or a goggle — now with a bifocal lens!
- Change out the temples and head strap with the simple push of a button.
  - Venting channels in the foam help minimize fogging.



Part #	Frame	Lens	Magnification
21MA15	Black/Foam Edge	Clear fx2 Anti-Fog	1.5 Diopter
21MA20	Black/Foam Edge	Clear fx2 Anti-Fog	2.0 Diopter
21MA25	Black/Foam Edge	Clear fx2 Anti-Fog	2.5 Diopter
21MB15	Black/Foam Edge	Gray fx2 Anti-Fog	1.5 Diopter
21MB20	Black/Foam Edge	Gray fx2 Anti-Fog	2.0 Diopter
21MB25	Black/Foam Edge	Gray fx2 Anti-Fog	2.5 Diopter



STARLITE® FOAMPRO™ MAG

- Same popular design as the original StarLite® MAG, with OptiFit™ foam technology to block dirt and debris.
- OptiFit™ foam features tapered design, which creates a more custom seal for most facial profiles.
  - Channels along foam combined with anti-fog coating fight fogging.

Part #	Temple	Lens	Magnification
46MF15	Clear	Clear fx2 Anti-Fog	1.5 Diopter
46MF20	Clear	Clear fx2 Anti-Fog	2.0 Diopter





# OVER-THE-GLASSES PROTECTION

Many workers who need industrial eye protection also wear corrective lenses, and prescription safety eyewear can be a costly option for employers. Over-the-glasses (OTG) eye protection is an alternative solution for employers who want a cost-effective product that still provides durable eye protection for those who wear prescription glasses.



## COVER2®

A contemporary OTG solution, Cover2® is more compact and lightweight than traditional, bulky OTG eyewear.

- One-piece polycarbonate lens fits over most prescription glasses.
- Lightweight design, with adjustable-length temples for a customized fit.
- Flexible temple tips minimize pinching behind the ears.



Soft temple tips make Cover2® an extremely comfortable OTG solution.

Part #	Temple	Lens
6980	Black	Clear
6983	Black	Gray



COVER2® IR also available. See page 27.



## COVERALLS™

Traditional style OTG eye protection. The generous size of CoverAlls™ will fit over nearly all prescription eyewear.

- Adjustable-length, ratcheting temples help provide a custom fit.
- Large, one-piece polycarbonate lens provides workers with a wide field of vision.
- Integrated brow guard and side shields offer additional protection.

Part #	Temple	Lens
6880	Black	Clear
6883	Black	Gray



# VISITOR SPECTACLES

Plant guests need eye protection too. For cost-effective, one-time-use safety eyewear, Gateway Safety offers visitor spectacles in both bulk and dispenser box packaging.



## UTILITY™ VS

Classic Utility™ visitor spectacles are an uncoated, economical solution for plant guests who need one-time-use eye protection.

- Classic style combines a panoramic view with durable impact protection.
- Large, vented side shields help minimize fogging and provide extra coverage.
- Uncoated lenses for cost-effective solutions.

Part #	Temple	Lens	Std. Pkg.
<b>Dispenser Box</b>			
5880	Clear	Clear	10/box
5883	Gray	Gray	10/box
<b>Bulk</b>			
5880B	Clear	Clear	100/box



## STROBE™ VS

With a traditional look, Strobe™ VS is an uncoated, cost-effective safety eyewear solution for visitors that still offers serious protection.

- Large, integrated side shields provide all-around protection.
- Rugged yet lightweight, with adjustable temples for maximum comfort.

Part #	Frame	Lens	Std. Pkg.
<b>Bulk</b>			
55GB80	Black	Clear	100/box
55GB83	Black	Gray	100/box



# EYEWEAR ACCESSORIES

When not cared for properly, safety eyewear can turn into a costly expense for employers. Gateway Safety offers eyewear accessories that help extend the life of eye protection or add beneficial features to non-safety eyewear products.

## KLEEN VIEW®

Kleen View® lens cleaning products contain an anti-fog, anti-static formula that helps extend the life of eyewear.

- Attractive, compact lens cleaning stations in durable cardboard construction.
- Spray solution is packaged with soft, non-abrasive tissues.
- Single-use towelettes are also available for quick lens cleaning in a convenient dispenser box.

Part #	Description
551	Disposable Lens Cleaning Station 8 oz. Bottle of Solution/600 Tissues
552	Lens Cleaning Towelettes 100 Individually Sealed Towelettes



## EYEWEAR CASES

Eyewear cases help extend the life of safety eyewear by protecting glasses when not in use.

- Crumple pouch with standard drawstring easily holds most safety glasses.
- Available in standard black or a stylish silver vinyl with the Gateway Safety logo.

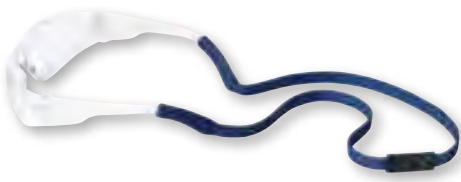
Part #	Description
C8000	Crumple Nylon Pouch with Drawstring
C8200	Silver Crumple Pouch with Gateway Safety Logo



## DOODADZ™ EYEWEAR RETAINERS

With a stylish design and cost-effective price, DooDadz™ are a popular solution for those who want their eyewear close at hand.

- Soft nylon/polyester blend.
- QuikRelease™ breakaway feature.
- Sleeve tips fit most standard spectacles.



Part #	Description	Breakaway
420	Black	QuikRelease™
421	Red	QuikRelease™
422	Navy Blue	QuikRelease™
424	Gray	QuikRelease™

## GIZMO™ EYEWEAR RETAINERS

The pinnacle of stylish safety retainers, Gizmo's™ adjustable toggle provides an extra secure fit — it feels as good as it looks!

- 100% cotton material.
- QuikPop™ breakaway feature.
- Sleeve tips fit narrow spectacles.



Part #	Description	Breakaway
430	Black	QuikPop™
431	Red	QuikPop™
432	Navy Blue	QuikPop™
434	Gray	QuikPop™

## CORDZ™ EYEWEAR RETAINERS

Economically priced, Cordz™ are a highly versatile retainer that can be worn with virtually any glasses.

- 100% nylon material.
- QuikPop™ breakaway feature.
- Loop tips fit virtually all spectacles.



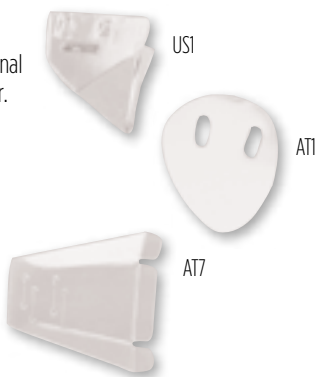
Part #	Description	Breakaway
400	Black	QuikPop™
402	Navy Blue	QuikPop™
407	Red	QuikPop™
414	Gray	QuikPop™
415	Hunter Green	QuikPop™
416	Hi-Viz Orange	QuikPop™
417	Freedom	QuikPop™

## SIDE SHIELDS

Side Shields add side protection to traditional prescription and non-prescription eyewear.

- Available in easy-to-install slip-on or clip-on versions.

Part #	Description
US1	Clear Clip-On
AT1	Clear Slip-On
AT7	Clear Slip-On Spec-Shields®



## FLIP-UPS™

Flip-Ups™ quickly attach to traditional clear protective eyewear, enabling workers to do different jobs.

- Easy on/off spring-loaded clip firmly grips eyewear frame for secure fit.
- Flip-Ups do not separately comply with any protective eyewear standards.

Part #	Description
G2	Gray/Polarized
G4	IR Filter 5.0/2mm-Thick Polycarbonate





IMPACT & SPLASH GOGGLES

For those who need protection from impact, liquid splashes and debris, safety goggles are the optimal solution. Gateway Safety provides traditional goggle styles that fit over most prescription glasses, as well as more modern, lightweight safety goggle options.



WHEELZ®

- Contemporary protection for those who work hard, Wheelz® is a lightweight and stylish goggle that provides excellent protection.
- Compact frame is more comfortable than traditional bulky goggles.
  - Whirlwind™ ventilation system minimizes fogging by circulating air through the optical chamber.
  - Elastic head strap can easily be adjusted to ensure a safe, snug fit.

Part #	Frame	Lens
45080	Clear	Clear
45883	Black	Gray
45079	Clear	Clear fx2 Anti-Fog
45878	Black	Gray fx2 Anti-Fog
4588M	Black	Silver Mirror
4589M	Black	Blue Mirror
4588F	Black	Silver Mirror fx2 Anti-Fog
4589F	Black	Blue Mirror fx2 Anti-Fog
4589P	Black/Foam Edge	Clear fx2 Anti-Fog
4588P	Black/Foam Edge	Gray fx2 Anti-Fog



Wheelz FOAM helps block debris and absorbs perspiration.



Wheelz provides splash and impact protection while also keeping out dust and debris.

WHEELZ® IR

Part #	Frame	Lens
45564	Green	IR Filter Shade 3.0
45566	Green	IR Filter Shade 5.0

See page 28.



CYCLONE®

- Cyclone® is a premium splash-to-impact goggle, with a wide viewing area and a versatility that many workers need.
- Unique, removable vent inserts convert goggle from impact and splash protection to impact-only protection.
  - Strong polycarbonate lens is surrounded by a sturdy vinyl frame for extra durability.
  - Adjustable headband ensures a comfortable yet secure fit.

Part #	Vent	Lens
40212	Double-Take™ Inserts Included	Clear fx2 Anti-Fog



Removable Double-Take™ inserts convert Cyclone from a splash to well-vented impact-only goggle in seconds.



Whirlwind™ Ventilation System improves user comfort by forcing air through optical chambers.

Whirlwind™ Ventilation System

Industry experts agree that goggles can present a greater concern for fogging than regular safety glasses because their snug fit may reduce ventilation. However, the Whirlwind™ ventilation system moves air within safety eyewear to help lower the temperature and evaporate humidity, reducing the fogging risk.



TECHNICIAN™ IMPACT GOGGLE

Part #	Vent	Lens
32061	Cap Vent	Clear
32062	Cap Vent	Clear fx2 Anti-Fog
32021	Perforated Vent	Clear
32022	Perforated Vent	Clear fx2 Anti-Fog



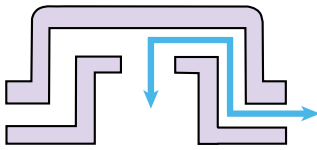
TECHNICIAN™ SPLASH GOGGLE

Part #	Vent	Lens
32391	390 Cap Vent	Clear
32392	390 Cap Vent	Clear fx2 Anti-Fog



TECHNICIAN™

- A classic impact and splash goggle line, Technician™ already has the confidence of many workers.
- Traditional design features three unique venting system options: perforated, cap vent, and patented 390 vent.
  - Perforated and cap venting systems provide ideal impact protection for dusty environments.
  - Innovative 390 (three separate 90° angles) venting system creates one of the best splash goggles available.



390 Venting System

Technician Splash features a unique venting system that consists of three 90° angles to prevent splash intrusion!



# WELDING SAFETY EYEWEAR

Employees whose work exposes them to radiant energy or light radiation need special eye protection. Gateway Safety provides light welding protection in the form of IR safety glasses and goggles. Be sure to note the IR filter shade level needed for a particular environment or application.



## STARLITE® IR

Still the one. The original. The best. Popular, innovative design combines low-cost protective eyewear with all-around impact protection in IR Filter Shades 3.0 and 5.0.

Part #	Temple	Lens
4664	Black	IR Filter Shade 3.0
4666	Black	IR Filter Shade 5.0



## CONQUEROR® IR

Triumph over workplace hazards. Conqueror® is a cost-effective choice over similar styles with its improved comfort features in IR Filter Shade 5.0.

Part #	Frame	Lens
28GB66	Black	IR Filter Shade 5.0



## STROBE™ IR

With a traditional look, Strobe™ is a cost-effective safety eyewear solution that still offers serious protection in IR Filter Shades 3.0 and 5.0.

Part #	Frame	Lens
49GB64	Black	IR Filter Shade 3.0
49GB66	Black	IR Filter Shade 5.0



## COVER2® IR OTG

A contemporary OTG solution, Cover2® is more compact and lightweight than traditional, bulky OTG eyewear in IR Filter Shade 5.0.

Part #	Temple	Lens
6966	Black	IR Filter Shade 5.0



## WHEELZ® IR

A contemporary goggle style for those who need IR protection, Wheelz® IR is lightweight and stylish.

- Combines the style and comfort of the original Wheelz goggle with the added protection of a low-level IR filter.
- Compact frame is more comfortable than traditionally bulky goggles.
- Elastic head strap can easily be adjusted to ensure a safe, snug fit.

Part #	Frame	Lens
45564	Green	IR Filter Shade 3.0
45566	Green	IR Filter Shade 5.0



## 1710 LIFT FRONT GOGGLE & 1775 STATIONARY FRONT GOGGLE

Classic soft-frame welding goggle series that provides optimal view of the work area.

- Available in a lift-front or stationary-front option.
- Soft vinyl frame includes a large venting hood that minimizes fogging.
- Designed to fit over most spectacles and accommodate magnifying lenses.

Part #	Frame	Lens
1710U50	Soft	2 x 4-1/4" Cover/Lift Front/Shade 5
1775U50	Soft	2 x 4-1/4" Cover/Stationary Front/Shade 5



## 1100 ECONOMY WELDING GOGGLE

An economical, fixed, soft-frame solution in a classic welding goggle style.

- Soft, lightweight frame is contoured to hug the face securely.
- Large frame fits over most spectacles.
- Popular goggle for employers with a limited safety budget.

Part #	Frame	Lens
1100U50	Soft	2 x 4-1/4" Cover/Shade 5



## 36 CUP GOGGLE & 35 CHIPPING GOGGLE

Classic, 50mm rigid-cup welding goggle.

- Shade 5 ideal for light welding applications in hot environments.
- Double-walled eyecups with multiple slot vents help minimize fogging.
- 3mm-thick, scratch-resistant polycarbonate lenses.



Part #	Frame	Lens
36U50	Rigid	50mm Cup/Shade 5
35IPO	Rigid	50mm/Cup/Clear



## REPLACEMENT FILTER & SAFETY LENSES

Gateway Safety filter and safety lenses have been tested and certified to meet the high-mass and high-velocity impact tests of ANSI Z87.1+ and CSA Z94.3 standards when properly installed with Gateway Safety goggles.



### POLYCARBONATE IR FILTER LENSES

Provide limited infrared filtration during welding applications.

Part #	Size	Lens
50U __	50mm	Shades 4-6
24U __	2 x 4-1/4"	Shades 4-6, 8-12
45U __	4-1/2 x 5-1/4"	Shades 8-12

### CLEAR POLYCARBONATE COVER/SAFETY LENSES

Provide limited impact protection for welding applications.

Part #	Size
50U01	50mm/.060" Thick
24U01	2 x 4-1/4"/.060" Thick
45U01	4-1/2 x 5-1/4"/.060" Thick

### GOLD-COATED POLYCARBONATE IR FILTER LENSES

Provide exceptional heat deflection, resulting in a better field of vision.

Part #	Size	Lens
24G __	2 x 4-1/4"	Shades 8-12
45G __	4-1/2 x 5-1/4"	Shades 8-12

### CLEAR POLYCARBONATE MAGNIFYING LENSES

Provide magnified vision, which reduces eye fatigue and discomfort.

Part #	Size	Lens
CPM __ __	2 x 4-1/4"	See Diopter Options

**Diopters:** 0.75/1.00/1.25/1.50/1.75/2.00/2.25/2.50

### CLEAR POLYCARBONATE CHIPPING LENSES

Provide limited impact protection for chipping applications.

Part #	Size	Lens
LP1	50mm/3mm Thick	Clear

### Safety Tip: IR Protection

A shade number on a welding lens indicates the intensity of IR light radiation that is allowed to pass through a filter lens to one's eyes. Therefore, the higher the shade number, the darker the filter and the less IR light radiation that will pass through the lens.



# FACE PROTECTION

Headgear & Visors | Cap Adapters

## FACE PROTECTION ICONS TO LOOK FOR

Throughout the Face Protection section of this catalog, you will find a number of icons. Each icon packs a lot of information into a little bit of space. Don't take them lightly. When choosing personal protection, consider whether the "mark" is appropriate for your application.



When you see the **ANSI Z87.1+ Certified** icon, you know that both Gateway Safety and an independent, third-party laboratory regularly test and certify that this product meets or exceeds the ANSI Z87.1+ standard.



When you see the **CSA Z94.3 Certified** icon, you know that both Gateway Safety and an independent, third-party laboratory regularly test and certify that this product meets or exceeds the CSA Z94.3 standard.



When you see the **Meets ANSI Z87.1+** icon, you know that Gateway Safety regularly tests and certifies that this product meets or exceeds the ANSI Z87.1+ standard.



When you see the **Meets CSA Z94.3** icon, you know that Gateway Safety regularly tests and certifies that this product meets or exceeds the CSA Z94.3 standard.



When you see the **c-UL-us LISTED** icon, you know that Underwriters Laboratories is the independent, third-party agency that has certified that this product meets the ANSI Z87.1+ and CSA Z94.3 standards. Confirmation can be found in their "Online Certifications Directory" at [www.ul.com](http://www.ul.com).



When you see the **99.9% UV-A, UV-B and UV-C Protection** icon, you know that Gateway Safety regularly tests and certifies that this product blocks 99.9% of UV-A, UV-B and UV-C radiation up to 380nm.

## VISOR SELECTION CHART

More than ornamental, each visor option serves a specific function. This visor selection chart provides a general usage guideline. However, always consult your safety director to determine the proper visor option for each application. All Gateway Safety visors block 99.9% of UV-A, UV-B and UV-C light up to 380 nm.



Ideal for indoor applications. Excellent general purpose selection, offering superior optics and impact protection.



Primarily used for outdoor applications. Minimizes glare that can result in eye strain and fatigue.



IR Filter Shade 3.0



IR Filter Shade 5.0

For use around light welding or light brazing/cutting applications.

## FACE PROTECTION

## HEADGEAR & VISORS

Gateway Safety's face protection products are known for their superior fit and comfort. From anti-fog to specialty visors for light welding and cutting, our face shields are tested for safety and quality, and designed to help increase compliance in a wide range of applications.



## VENOM®

Take the bite out of harmful environments. The award-winning Venom® design is a formidable but economical face protector.

- Sleek, contemporary visor design that offers complete protection from forehead to chin.
- Three-part adjustment system provides a custom, comfortable fit for all-day use.
- Rotating ratchet adjustment easily fits over the nape of the neck for a secure fit.

Part #	Description
677	Venom® Headgear Only
679	Venom® Combo-Pak: 677 Headgear & 675 Visor
687	Venom Replacement Browpad

### Venom® Visors .060" Polycarbonate - Cylinder, Molded

Part #	Description	Visor
675	9 x 15-1/2" Venom® Visor	Clear
678	9 x 15-1/2" Venom® Visor	Gray
676	9 x 15-1/2" Venom® Visor	Clear fX2 Anti-Fog
683	9 x 15-1/2" Venom® Visor	IR Filter Shade 3.0
685	9 x 15-1/2" Venom® Visor	IR Filter Shade 5.0



## Face Protection Survey

In an employee survey conducted by a national pharmaceutical company, 83% of those surveyed gave Gateway Safety's Venom® face protection a positive review for fit and comfort. In comparison, only 32% of those surveyed gave the other face protection products a positive review. The company had implemented the survey to increase compliance and reduce complaints regarding the face protection products being offered to its employees. Survey participants reported that Venom fit well, especially over goggles, felt extremely comfortable, and provided a better fit overall.



Three-part comfort adjustment system makes Venom the brand to choose for long-wearing — or even all-day — applications.

All certification information is accurate as of the print date of this catalog.  
For updated information, contact Gateway Safety's customer service department at 800-822-5347.  
All Gateway Safety products come with a limited warranty. See page 3 for warranty information.





UNIVERSAL-FIT VISORS

Traditional visor design. Featuring a universal-fit hole pattern that can be worn with most headgear and cap adapter brands.

- Rectangular-shaped visors are available in molded or flat-stock alternatives.
- Lightweight yet durable face protection is a cost-effective alternative.
- Universal-fit visors can be worn with the award-winning Venom® headgear units.

.060” Polycarbonate – Rectangular, Molded

Part #	Description	Visor
660	8 x 15-1/2"	Clear
661	9 x 15-1/2"	Clear
663	8 x 15-1/2"	IR Filter Shade 5.0
664	8 x 15-1/2"	IR Filter Shade 3.0
674	8 x 15-1/2"	IR Filter Shade 5.0/Gold Mirror



FLAT STOCK VISORS

.040” Polycarbonate – Rectangular, Flat Stock

Part #	Description	Visor
651	8 x 15-1/2"	Clear/Aluminum Bound
654	8 x 15-1/2"	Clear/Unbound

#651 and #654 flat stock visors meet the ANSI Z87.1 standard.

.040” PCTG – Rectangular, Flat Stock

Part #	Description	Visor
668	8 x 15-1/2"	Clear

The #668 flat stock visor meets ANSI Z87.1 and CSA Z94.3 standards.

CAP ADAPTERS

Head and face protection combined. Cap adapters facilitate the use of Venom® visors and universal-fit visors with most hard hats.

- Standard Di-Electric. Secured by a durable strap, this adapter fits most hard hats.
- Slotted Di-Electric. Adapter is secured by blades that snap into certain hard hat slots.
- Aluminum. Secured by a coiled spring, this rugged adapter fits most hard hats.

Part #	Description
680	Di-Electric Cap Adapter
681*	Slotted Di-Electric Cap Adapter
682	Aluminum Cap Adapter

\*681 specially designed only for Standard hard hat.



Cap adapters quickly turn standard safety helmets into versatile head and face protection.



HEAD PROTECTION

Safety Helmets



HEAD PROTECTION ICONS TO LOOK FOR

In the Head Protection section of this catalog, you will find a pair of icons. Both icons pack a lot of information into a little bit of space. Don't take them lightly. When choosing personal protection, consider whether the “mark” is appropriate for your application.



When you see the **Independently Tested ANSI Z89.1 Type I Class E** icon, you know that this product has been independently tested and it meets the ANSI Z89.1 standard for Type I, Class E, G and C safety helmets.



When you see the **Independently Tested ANSI Z89.1 Type I Class C Only** icon, you know that Gateway Safety has had this product independently tested and it meets the ANSI Z89.1 standard for Type I, Class C safety helmets ONLY. Accordingly, it is conductive and should NOT be used whenever there is a risk of electrical conductivity.



Head Protection imprinting is available upon request. See page 40 for more information.

All certification information is accurate as of the print date of this catalog. For updated information, contact Gateway Safety's customer service department at 800-822-5347. All Gateway Safety products come with a limited warranty. See page 3 for warranty information.



SAFETY  
HELMETS

Gateway Safety offers safety helmets for virtually every work environment, with customization and styling that can really make a positive difference for the wearer. From vented shells that allow heat to escape in hot working environments to electrical insulation. From soft brow pads to rotating ratchets. Our helmets have what it takes to give workers the right features and fit for daily wear. When you need comfort and protection, we deliver.

New Product of the Year

The Serpent Safety helmet is a New Product of the Year award winner from Occupational Health & Safety’s annual awards program.



SERPENT® SAFETY HELMET

- Serpent® is an ultra-comfortable safety helmet that offers durable head protection for a wide range of work environments.
- Sleek, snake-head shell design provides modern style.
  - Manufactured from a high-density polyethylene material that’s incredibly lightweight — just 13.1 ounces.
  - Eight-point, six-strap nylon suspension is comfortable yet provides exceptional impact absorption.
  - Soft cloth brow pad helps absorb moisture.
  - Independently tested to meet ANSI Z89.1, including the voluntary optional tests for reverse donning, lower temperature, and high-visibility performance.



SERPENT® SAFETY HELMET (CLASS E)

- A sleek closed shell design makes this product suitable for most environments.
- Independently tested to meet the ANSI Z89.1 standard for Type 1, Class E, G, & C safety helmets.

Ratchet Suspension

Part #	Shell	Part #	Shell
72200	White	72206	Pink
72201	Yellow	72207	Black
72202	Red	72208	Gray
72203	Blue	72216	Hi-Viz Orange
72204	Orange	72218	Hi-Viz Limon
72205	Green		

Replacement Parts (all Serpent models)

Part #	Description
71220	Suspension, Ratchet
71229	Brow Pad

Ratchet adjustment makes sizing easy. A rotating ratchet suspension adjusts to fit 6-5/8 – 8-1/4 head sizes.



CoolSense™ Air Flow System lets heat escape, keeping workers cooler, which promotes compliance.



SERPENT® SAFETY HELMET (CLASS C)

- A vented shell allows heat to escape, keeping workers cooler on hot jobsites.
- Independently tested to meet the ANSI Z89.1 standard for Type 1, Class C helmets only.

Ratchet Suspension

Part #	Shell
71200	White
71201	Yellow
71202	Red
71203	Blue
71204	Orange
71205	Green
71206	Pink
71207	Black
71208	Gray
71216	Hi-Viz Orange
71218	Hi-Viz Limon

Replacement Parts (all Serpent models)

Part #	Description
71220	Suspension, Ratchet
71229	Brow Pad

Safety Tip

Class C Safety Helmets do not provide any electrical insulation. They should not be worn by those working with electricity.

STANDARD SAFETY HELMET

Traditional design, unvented safety helmet offers excellent impact resistance and electrical insulation.

- Six-point nylon suspension with ratchet or pin-lock adjustment for sizing.
- Includes soft, cushioned brow pad to absorb moisture.
- Features universal accessory slots for visors.
- Independently tested to meet the ANSI Z89.1 standard for Type 1, Class E, G, & C.

Pin-Lock Suspension

Part #	Color
600	White
601	Yellow
602	Red
603	Blue
604	Orange
605	Green
606	Hi-Viz Orange
607	Replacement Suspension

Ratchet Suspension

Part #	Color
630	White
631	Yellow
632	Red
633	Blue
634	Orange
635	Green
636	Hi-Viz Orange
638	Replacement Suspension




Replacement Parts

Part #	Description
639	Standard Brow Pad

Safety Tip

The ANSI Z89.1 head protection standard includes three optional tests for safety helmets. Look for these marks on your safety helmet to determine if the manufacturer has taken these extra steps:

**Reverse Donning:** Helmets marked with a “reverse donning arrow”  can be worn frontward or backward in accordance with the manufacturer’s wearing instructions. They pass all testing requirements, whether worn frontward or backward.

**Lower Temperature:** Helmets marked with an “LT” indicate that the hard hat meets all testing requirements of the standard when preconditioned at a temperature of -30°C (-22°F).

**Higher Temperature:** Helmets marked with an “HT” indicate that the hard hat meets all testing requirements of the standard when preconditioned at a temperature of 60°C (140°F)

**High Visibility:** Helmets marked with an “HV” indicate that the hard hat meets all testing requirements of the standard for high-visibility colors. This includes tests for chromaticity and luminescence.



# HEARING PROTECTION

Earplugs | Earmuffs

## HEARING PROTECTION ICONS TO LOOK FOR

Throughout the Hearing Protection section of this catalog, you will find a number of icons. Each icon packs a lot of information into a little bit of space. Don't take them lightly. When choosing personal protection, consider whether the "mark" is appropriate for your application.



When you see this icon you know that this hearing protection has been independently tested in an accredited laboratory and has obtained a noise reduction rating of 31.



When you see this icon you know that this hearing protection has been independently tested in an accredited laboratory and has obtained a noise reduction rating of 29.



When you see this icon you know that this hearing protection has been independently tested in an accredited laboratory and has obtained a noise reduction rating of 25.

## INDEPENDENT TESTING IN ACCREDITED LABS

Historically, manufacturers of hearing protection devices have obtained their Noise Reduction Ratings (NRR) in an in-house laboratory setting. However, many safety experts recommend the use of an independent, accredited laboratory to determine NRR data.

Gateway Safety has all of our hearing protection devices independently tested at an accredited laboratory. As a result, employers can provide our hearing protection devices with the confidence that Gateway Safety's NRR data is accurate and has been verified by a non-biased third-party source.

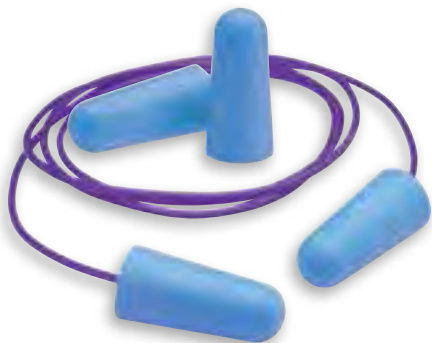
All certification information is accurate as of the print date of this catalog. For updated information, contact Gateway Safety's customer service department at 800-822-5347. All Gateway Safety products come with a limited warranty. See page 3 for warranty information.



## HEARING PROTECTION

## EARPLUGS & EARMUFFS

These hearing protection solutions fit the ears of employees—and the budgets of their employers. Gateway Safety's earplugs and earmuffs are comfortable and easy to use. Plus, they come in noticeable designs and colors that make compliance checks easy.



### GLOPLUGZ®

Serious protection at an affordable price. Soft, comfortable GloPlugz® feature a high, independently tested 31 NRR.

- Manufacturing process creates a soft, smooth "skin" that makes insertion easy.
- Made of a non-allergenic and moisture-resistant polyurethane material.

Part #	Description
92202	Uncorded, Tapered PU Earplugs/Polybagged
92212	Corded, Tapered PU Earplugs/Polybagged



Dispenser box allows for easy access and encourages compliance!

### TWISTERS™

A sound solution ... reusable protection. A long-wearing, multi-use earplug that will benefit your bottom line.

- Triple-flanged design, with an air bubble tip, provides exceptional long-term comfort.
- Soft silicone material is easy to clean, which helps extend your hearing-protection budget.

Part #	Description
93002	Uncorded, Triple-Flanged Earplugs/Polybagged
93012	Corded, Triple-Flanged Earplugs/Polybagged



### SOUNDDECISION™



A smart solution. SoundDecision™ is an economical response to limited hearing-protection budgets.

- A standard style that provides high-quality, low-cost, mid-level hearing protection.
- Fully adjustable headband and light weight make this a very comfortable earmuff.

Part #	Description
95134	Three Position, Dielectric, Green & Black Earmuff



Part #	Description
95334	Three Position, Dielectric, Gray Earmuff



### SOUNDOUT™ II

New and improved, SoundOut™ II features one of the highest independently tested earmuff Noise Reduction Ratings in the industry, with a 29 NRR.

- Three-position, adjustable length and dielectric design provides extraordinary versatility.
- Soft, extra-large cushions distribute pressure around the entire head for maximum comfort.

### Safety Tip

According to the Occupational Safety and Health Administration, employers should provide hearing protection to their employees whenever noise exposure equals or exceeds an eight-hour, time-weighted, average sound level of 85 decibels.



# RESPIRATORY PROTECTION

N95 | N99 | N100 | R95 | P100 Disposable Respirators

## RESPIRATORY PROTECTION ICONS TO LOOK FOR

In the Respiratory Protection section of this catalog, you will find a number of icons. Each icon packs a lot of information into a little bit of space. Don't take them lightly. When choosing personal protection, consider whether the "mark" is appropriate for your application.



When you see the **N95 NIOSH Approved** icon, you know that NIOSH regularly tests and certifies that this product provides 95% filtration against particulate aerosols free of oils below the Permissible Exposure Limit (PEL).



When you see the **N99 NIOSH Approved** icon, you know that NIOSH regularly tests and certifies that this product provides 99.97% filtration against particulate aerosols below the Permissible Exposure Limit (PEL).



When you see the **N100 NIOSH Approved** icon, you know that NIOSH regularly tests and certifies that this product provides 99.97% filtration against particulate aerosols free of oils below the Permissible Exposure Limit (PEL).



When you see the **R95 NIOSH Approved** icon, you know that NIOSH regularly tests and certifies that this product provides 95% filtration against particulate aerosols below the Permissible Exposure Limit (PEL).



When you see the **P100 NIOSH Approved** icon, you know that NIOSH regularly tests and certifies that this product provides 99.97% filtration against particulate aerosols below the Permissible Exposure Limit (PEL).

### Respiratory Violations

Respiratory protection violations commonly rank in the top five under OSHA's annual "most frequently cited violations list." Comfort features, such as those found in a PeakFit respirator, are key to helping employers increase compliance rates among their employees.

All certification information is accurate as of the print date of this catalog.  
For updated information, contact Gateway Safety's customer service department at 800-822-5347.  
All Gateway Safety products come with a limited warranty. See page 3 for warranty information.



## RESPIRATORY PROTECTION

### DISPOSABLE RESPIRATORS

Gateway Safety's collection of NIOSH-approved respiratory products provide N95 to P100 levels of protection. These disposable particulate respirators are exceptionally comfortable and available at a better value than many competing products in the market.

#### PEAKFIT®

The peak of safety and comfort in NIOSH-approved disposable respiratory protection, PeakFit® offers the perfect fit.

- Large, contoured design makes breathing easy, reducing worker fatigue.
- Molded nose bridge, with no metal nosepiece — no pinching required.
- Adjustable, one-piece cloth head strap is more durable and comfortable than conventional stapled versions.

Part #	Description
80101	N95 Particulate Respirator 95% filtration against particulate aerosols free of oils below the PEL*
80102V	N95 Particulate Respirator/With Vent 95% filtration against particulate aerosols free of oils below the PEL*
80101EA002	Two-Pack, N95 Particulate Respirator
80102EA002	Two-Pack, N95 Particulate Respirator/With Vent
80104CV	N95 OV Particulate Respirator/With Vent 95% filtration against particulate aerosols free of oils below the PEL and nuisance level organic vapors below the PEL*
80105A	N95 AG Particulate Respirator 95% filtration against particulate aerosols free of oils below the PEL and nuisance level organic vapors and acid gases below the PEL*

\*PEL = Permissible Exposure Limit



Adjustable cloth head strap provides a custom fit and tight seal.

#### TRUAIR®

- Economically priced to fit any budget.
- Widely accepted design that encourages compliance.
- Large molded shell that helps reduce breathing resistance, minimizing end-user fatigue.
- Non-latex elastic head straps, plus an adjustable nosepiece, provide a safe, secure fit.
- Available with an exhalation vent that reduces hot air buildup; makes breathing easier.

80301	N95 Particulate Respirator 95% filtration against aerosols free of oils below the PEL.*
80302V	N95 Particulate Respirator/With Vent 95% filtration against aerosols free of oils below the PEL*
80301EA002	Two-Pack, N95 Particulate Respirator
80302EA002	Two-Pack, N95 Particulate Respirator/With Vent
80402V	N99 Particulate Respirator/With Vent 99% filtration against aerosols free of oils below the PEL*
80502V	N100 Particulate Respirator/With Vent 99.97% filtration against aerosols free of oils below the PEL*
80602V	R95 Particulate Respirator/With Vent 95% of airborne particles and is somewhat resistant to oil below the PEL*
80902V	P100 Particulate Respirator/With Vent 99.97% filtration against aerosols below the PEL*
80904V	P100 Particulate Respirator/With Vent 99.97% filtration against aerosols below the PEL*

\*PEL = Permissible Exposure Limit



#### SANIFOLD®

Individually and hygienically sealed, SaniFold® respirators help ensure the contaminant-free condition of each mask when opened.

- Foldable design is ideal for easy carrying and storage.
- Large, flexible shell creates an "air pocket" that makes breathing easier.
- Ultra-soft polypropylene lining provides superior comfort.

Part #	Description
80201	N95 Particulate Respirator 95% filtration against particulate aerosols free of oils below the PEL*
80202V	N95 Particulate Respirator/With Vent 95% filtration against particulate aerosols free of oils below the PEL*

\*PEL = Permissible Exposure Limit



SaniFold® respirators remain contaminant-free in the tool box or at the workstation.



SAFETY ID LANYARDS

GADGETZ™

ID scanning with just a click. Gadgetz™ features a two-piece, detachable clasp that makes it an excellent solution for swiping of ID cards.

- Extremely durable 100% polyester material.
- Features Mega QuikRelease™ breakaway protection.

Part #	Color	Breakaway
460	Black	Mega QuikRelease™
461	Red	Mega QuikRelease™
462	Navy Blue	Mega QuikRelease™



TRINKETZ™

Protect your workplace. Trinketz™ comes with an adjustable toggle, which helps eliminate loose material, keeping workers safe and workplaces secure.

- Sturdy interwoven nylon/polyester blend.
- Features QuikPop™ breakaway protection.

Part #	Color	Breakaway
480	Black	QuikPop™
481	Red	QuikPop™
482	Navy Blue	QuikPop™
487	Freedom	QuikPop™



WIDGETZ™

Workplace security that fits any budget. Widgetz™ is a cost-effective identification solution to precarious workplace environments.

- Soft nylon/polyester blend.
- QuikRelease™ breakaway protection.



Part #	Color	Breakaway
471	Red	QuikRelease™
474	Gray	QuikRelease™

SPINNERZ™



A secure workplace with just a swipe. Spinnerz™ features a 30" coiled extension cord, which is an ideal solution for ID scanning.

- Keeps ID out of the way when not in use.
- 1/2" diameter imprintable surface.

Part #	Color	Size
490	Black	30" Retractable Cord
491	Red	30" Retractable Cord
492	Blue	30" Retractable Cord

BADGE HOLDERS

Protect your ID badge, proximity card, driver's license or other forms of identification that don't have a pre-punched slot.

Part #	Size
500	2-1/2" H x 3-1/2" W
510	3-1/2" H x 2-1/2" W



FAUCET-MOUNTED EYEWASH STATION

KLEEN EYES® II

New and improved. Kleen Eyes® II comes loaded with value-added enhancements.

- Adjustable fountain tips are 2" apart.
- Automatic diverter valve allows unit to return to normal operation when water is shut off.
- Connection ring simplifies difficult installations or alignments.

Part #	Description
KKE20	Kleen Eyes II



IMPRINTING & PRIVATE LABELING

PRODUCT IMPRINTING

Basic imprinting is an excellent yet economical way for distributors and end users to get their message out. For distributors who put their logo on the Gateway Safety products that they distribute, imprinting helps encourage customers to think of them first when it's time to reorder. For end users, it's an outstanding way to promote their brand and/or build enthusiasm for their company and its safety program.



SAFETY GLASSES IMPRINTING

One- or two-color imprinting is available on most Gateway Safety glasses. There is a minimum order of 100 units per safety glass style, with a 15 business day lead-time on all imprinting orders.

SAFETY HELMETS IMPRINTING

One- or two-color imprinting is available on all Gateway Safety helmets. There is a minimum order of 20 units per safety helmet style, with a 15 business day lead-time on all imprinting orders.



PRIVATE LABEL PRODUCTS

Large-volume users of Gateway Safety products have another customization option available – private label products.

With the purchase of significant quantities, Gateway Safety is able to produce safety products to match the unique color schemes of its distributor partners. Combined with a company logo, these colorful branded safety products will be a powerful addition to any product line or marketing program.

For more information on product imprinting programs or to learn more about creating a line of private label products, contact Gateway Safety's sales department at 800-822-5347.







## BECOMING A GATEWAY SAFETY DISTRIBUTION PARTNER

### Ask yourself, “Does my current supplier of above-the-shoulders safety equipment ... ”

Hold numerous product design awards, design patents and utility patents?

Gateway  
Safety



Your Current  
Supplier



Verify their quality with independent, third-party testing and certification programs?



Provide me with unique products and proven quality at a cost-effective price point?



Support my efforts with extensive advertising, public relations and customized sales tools?



Ship more than 99% of catalog stock orders within 24 hours and have a fill rate of over 99%?



You can see the difference. Here's what you can look forward to in a partnership with Gateway Safety.

- **Product Innovation.** As the place *Where Safety Meets Style*, Gateway Safety invests significant time and resources into the design and development of our industrial safety products. We work hard to develop superior safety products that look better, fit better and achieve better compliance. Our most innovative product features are patented, and several products have received third-party awards for their unique designs that provide both style and comfort.
- **Product Quality.** Gateway Safety helps minimize your product liability risk. Although it's not required by OSHA, Gateway Safety goes the extra step with many of our safety products by implementing an independent, third-party testing program. This ensures that our products meet the appropriate safety standards.
- **Cost-Effective Pricing.** Gateway Safety products will help improve your bottom line. Unlike many of our competitors with high overhead costs and bloated marketing budgets, Gateway Safety focuses on keeping our costs low and creating as many operating efficiencies as possible. As a result, we can provide our distribution partners with quality, cost-effective products.
- **Customized Marketing Support.** Our distribution partners can take advantage of unique distributor marketing tools, including a sample kit program, custom flyer program and quarterly company newsletter. We also maintain a dynamic advertising program that includes a high level of end-user marketing to assist our distribution customers with growing their businesses.
- **Superior Customer Service.** Gateway Safety customer service representatives are knowledgeable, friendly people who take pride in service and always “go the extra mile” to meet and exceed our partners’ needs. Plus, over 99% of our orders ship accurately, ship within 24 hours and ship complete; i.e., no backorders or errors of any kind.

You can count on Gateway Safety to be a solid long-term partner. Please give us a call at **800-822-5347** or visit our website **www.GatewaySafety.com** to learn more.

## DISTRIBUTOR SUPPORT

### MARKETING TOOLS

Gateway Safety helps support your efforts through a variety of marketing and support tools. Few of our competitors can offer these specialized programs that are customized for each distributor based on their needs. Take advantage of these great tools today!



### SAFETY EYEWEAR DISPLAYS

New designs! Attractive point-of-purchase displays are designed to hold Gateway Safety protective eyewear styles. These units serve as a strong safety “reminder” and are available in a variety of sizes to fit your display needs.

Part #	Description
531108	8-Unit Eyewear Display
531124	24-Unit Eyewear Display
531140	40-Unit Eyewear Display

### RETAINER/ID LANYARD DISPLAY

- Promote supplementary sales. Eyewear retainers extend the life of safety spectacles, while ID lanyards help create a secure work environment.
- Point-of-purchase displays are a proven source of secondary income.
  - Designed to accommodate all Gateway Safety eyewear retainers and ID lanyards.



Part #	Description
530008	8-Hook Display

### CUSTOM PACKAGING PROGRAMS

With a powerful presentation, Gateway Safety's retail packaging program offers a customizable solution that helps merchandise stand out in the crowd.

- Blister Pack offers a first-class impression.
- Clam Pack provides a 360° view of product.
- N95 respirators in a convenient two-pack baggie.



### CUSTOM SALES TOOLS

Show some sales-team love. Customized flyers and sales kits will inspire your sales force to sell more safety.

- Custom Flyers. You select the colors and products, we lay it out, then email you the PDF or send printed copies.
- Sales Kits. Pick your products to show, we design the label, fill the boxes with samples, and send them off to your sales team.



### PRODUCT LITERATURE

Give your team influential sales support. Gateway Safety product flyers provide compelling sales information that leaves a positive, long-lasting impression.

- Persuasive solution for promoting new products.
- Available for most Gateway Safety product lines.





**Distributed By:**



11111 Memphis Avenue  
Cleveland, Ohio 44144  
216-889-2000 • 800-822-5347  
Fax: 216-889-1200  
Email: [info@GatewaySafety.com](mailto:info@GatewaySafety.com)